



**Board of Directors**

Commander Jim Reid, Chair  
Chief Carl Tatum, Vice-Chair  
Dan Molner, LCSW, Secretary  
T. Wayne Florek, Treasurer  
Chief Tommy Smith  
Councilmember Randy Purvis  
(Alternate) Councilmember Tom Gallagher

Marilyn Gifford, M.D.  
Jack Sharon, M.D.  
Mayor Jeri Howells  
Mark Watkins  
John Scorsine  
Commissioner Sallie Clark  
(Alternate) Commissioner Dennis Hisey

**EL PASO COUNTY EMERGENCY SERVICES AGENCY  
BOARD MEETING AGENDA**

**Wednesday, February 2, 2011 – 2:00 p.m.**

**Pikes Peak Regional Development Center**

**2880 International Circle, 2nd Floor Hearing Room, Colorado Springs, CO 80910**

Call to Order – Determination of a quorum

This meeting is being recorded to assist in the production of meeting minutes.

**1. CHANGES TO AGENDA/POSTPONEMENTS**

**2. PUBLIC COMMENT**

**3. APPROVAL OF THE MINUTES OF DECEMBER 1, 2010**

**4. REGULAR BUSINESS**

A. Agreement Compliance Report for November & December 2010 (Eileen Gonzalez)

B. Committee Reports

- Medical Control Committee (Dr. Jack Sharon)
- Compliance Committee (Chair Jim Reid)

C. AMR Community Relations Reports for December 2010 & January 2011 (Tawnya Silloway)

D. Treasurer's Reports for December 2010 & January 2011 (Treasurer T. Wayne Florek)

**5. NEW BUSINESS**

A. Election of Officers (Chair Jim Reid)

B. Fourth Quarter 2010 Grant Award Recommendations (Chair Jim Reid)

C. Report: Activities and Possible Dates for 2014 RFP Process (Eileen Gonzalez)

D. Statement of Posting Locations (Eileen Gonzalez)

E. Board Member/Staff Comments

**6. EXECUTIVE SESSION REQUESTS**

In accordance with the Colorado Open Meetings Law, Section 24-6-402 (4), the El Paso County Emergency Services Agency, in open session, will determine whether it will hold a closed executive session. The matter for executive session will be limited to the topics identified in Section 24-6-402 (4) of the Open Meetings Law, and the topic for discussion will be stated in the open session in as much detail as possible without compromising the purpose of the executive session. The Chair shall poll the ESA members, and upon consent of two-thirds of the members present, an executive session will be held. If consent to the executive session is not given, the item may be discussed in open session or withdrawn from consideration.

**7. ADJOURNMENT**

**PACKETS ARE SENT VIA E-MAIL TO EXPEDITE INFORMATION**

Pursuant to the Colorado Open Meetings Law, CRS §24-6-401, et Seq. and ARTICLE TWO Section 2.9 B of THE EL PASO COUNTY EMERGENCY SERVICES AGENCY Agreement, this agenda was posted at the City Clerk's Office, located at 30 S. Nevada, Colorado Springs, Colorado and the El Paso County Administration Building, located at 27 E. Vermijo, Colorado Springs, Colorado on or before January 31, 2011. Please call Eileen Gonzalez at 520-7654 or email her at egonzalez@springsgov.com if you wish to submit your name and e-mail address to receive notice of future meetings.

| <b>SCHEDULE OF UPCOMING COMMITTEE MEETINGS</b> |                               |             |   |
|--|-------------------------------|-------------|---|
| <b>DATE</b>                                    | <b>MEETING</b>                | <b>TIME</b> | <b>LOCATION</b>                                   |
| <b>March 30, 2011</b>                          | Grant Committee               | 12:00 PM    | ESA offices, 2880 International Circle, Suite 110 |
| <b>March 30, 2011</b>                          | Contract Compliance Committee | 12:30 PM    | ESA offices, 2880 International Circle, Suite 110 |
| <b>March 30, 2011</b>                          | Agenda Prep Committee         | 1:00 PM     | ESA offices, 2880 International Circle, Suite 110 |
| <b>April 6, 2011</b>                           | Medical Control Committee     | 1:30 PM     | 2880 International Circle, 2nd Floor Hearing Room |
| <b>April 6, 2011</b>                           | ESA Board Meeting             | 2:00 PM     | 2880 International Circle, 2nd Floor Hearing Room |

# ESA December Board Meeting

## MINUTES

DECEMBER 1, 2010 2:00 P.M.

 PIKES PEAK REGIONAL BUILDING DEPARTMENT, 2880  
INTERNATIONAL CIRCLE, COLORADO SPRINGS

|                    |   |
|--------------------|---|
| <b>FACILITATOR</b> | Commander Jim Reid  |
| <b>NOTE TAKER</b>  | Eileen Gonzalez   |
| <b>ATTENDEES</b>   | Bob Demetry, Councilman Tom Gallagher, T. Wayne Florek, Jane Fredman, Dr. Marilyn Gifford, Mayor Jeri Howells, Dan Molner, John Scorsine, Dr. Jack Sharon, Chief Carl Tatum, Mark Watkins |
| <b>ABSENT</b>      | Commissioner Sallie Clark, Councilman Randy Purvis, Chief Tommy Smith   |

### Agenda topics

#### 1. CHANGES TO AGENDA/POSTPONEMENTS

|                   |
|-------------------|
| <b>DISCUSSION</b> |
| None.             |

#### 2. PUBLIC COMMENT

|                   |
|-------------------|
| <b>DISCUSSION</b> |
| None.             |

#### 3. APPROVAL OF THE MINUTES OF OCTOBER 6, 2010

|   |                           |
|---|---------------------------|
| <b>DISCUSSION</b>   |                           |
| None.   |                           |
| <b>MOTION</b>   | <b>PERSON RESPONSIBLE</b> |
| Motion to approve the minutes of the October 6, 2010 meeting. | Chief Carl Tatum          |
| Second  | John Scorsine             |
| Approved  | Unanimous                 |

#### 4.A. AGREEMENT COMPLIANCE REPORT FOR SEPTEMBER & OCTOBER 2010

|  |                           |
|--|---------------------------|
| <b>DISCUSSION</b>  |                           |
| <p>Eileen Gonzalez presented the agreement compliance report for September &amp; October 2010. She reported that there were no incidences of contract Level 0 during either September or October. The recommended assessments are \$6,468 for September and \$3,536 for October, for a total of \$10,004. There were 37 calls that exceeded the maximum response time for their zone in September, and 46 in October. The contractor exceeded the 90% response standard for the Urban, Suburban and Rural zones, as well as the 92% systemwide response standard for both months.</p> <p>The contractor referred 14 calls in September, all but two to Black Forest Fire/Rescue. As outlined in the report, Eileen called the Board's attention to two calls on September 17, 2010 that were referred to the Colorado Springs Fire Department (CSFD), which does not have a response agreement with the contractor approved by the ESA, and is thus considered to be an "unapproved responder" under Exhibit F, Section 2 of the contract. The circumstances of the calls do not indicate that there was a mass casualty situation, but rather that the contractor was experiencing a high volume of calls and dispatch staff chose to request the assistance of the CSFD's Squad 7 to transport patients to the hospital. The contractor has since issued a directive to its staff to cease referring calls to CSFD. The contractor referred 7 calls in October, all of which were referred to Black Forest Fire/Rescue. The contractor requested that 48 calls be exempted from the data to determine compliance with performance standards for September, and 27 calls for October.</p> |                           |
| <b>MOTION</b>  | <b>PERSON RESPONSIBLE</b> |
| Motion to approve the agreement compliance report for September & October 2010   | Dr. Jack Sharon           |

|          |                     |
|----------|---------------------|
| Second   | Dr. Marilyn Gifford |
| Approved | Unanimous           |

#### 4.B. COMMITTEE REPORTS

|  |
|--|
| <p><b>DISCUSSION</b></p> <p>Dr. Sharon reported that the Medical Control Committee met prior to the ESA Board meeting. He reported that Drs. Gifford and Ross reviewed three RSI cases and addressed one issue arising out of one of those cases. There were no patient complaints to consider at this meeting. He reported that they discussed the issue of coincident psychiatric/alcohol divers at both of the downtown EDs, which causes AMR to transport patients to the northern hospitals for those cases, causing delays because transports take longer. A summary of data relating to psychiatric/alcohol divers is attached.</p> <p>Commander Reid noted that the Compliance Committee did not meet in October. At its meeting of November 22, it considered and closed 11 complaints and one compliment. He noted that Scott McCune, Operations Manager from AMR, would be the committee's new point of contact regarding customer complaints and other operational issues. Chair Reid noted that the ESA had received a complaint over which it had no jurisdiction, regarding the performance of another ambulance transport provider, and asked for the Board's input on a letter that he would like to send to El Paso County, requesting that the County investigate the complaint. Dr. Sharon requested that information relating to the sections of the ESA's contract with AMR that were violated in the subject situation be included in the letter.</p> |
|--|

#### COUNCILMAN TOM GALLAGHER ARRIVED

#### 4.C. AMR COMMUNITY RELATIONS REPORTS FOR OCTOBER & NOVEMBER 2010

|  |
|--|
| <p><b>DISCUSSION</b></p> <p>Tawnya Silloway reported on AMR's community events for October and November, including a number of Sentimental Journeys. She is working on getting a concurrent resolution for the national EMS memorial passed, and requested assistance from any Board Members with a relationship with Representative Diana DeGette to help Tawnya get in contact with her.</p> |
|--|

#### 4.D. TREASURER'S REPORTS FOR OCTOBER & NOVEMBER 2010

| <p><b>DISCUSSION</b></p> <p>Wayne Florek presented the October &amp; November financial reports. In October, the ESA received July/August compliance penalties, and expenses included salary &amp; benefits for both City and County; fourth quarter rent payment; legal fees for August and September; and expenses relating to the website. For November, there was no revenue, and expenses included City salary &amp; benefits; legal fees for October; grant payments from the third quarter; and office supply expenses.</p> |                    |                    |   |            |        |              |          |           |
|--|--------------------|--------------------|---|------------|--------|--------------|----------|-----------|
| <table border="1"> <thead> <tr> <th>MOTION</th> <th>PERSON RESPONSIBLE</th> </tr> </thead> <tbody> <tr> <td>Motion to approve the Treasurer's report for October &amp; November 2010.</td> <td>Dan Molner</td> </tr> <tr> <td>Second</td> <td>Mark Watkins</td> </tr> <tr> <td>Approved</td> <td>Unanimous</td> </tr> </tbody> </table>  | MOTION             | PERSON RESPONSIBLE | Motion to approve the Treasurer's report for October & November 2010. | Dan Molner | Second | Mark Watkins | Approved | Unanimous |
| MOTION   | PERSON RESPONSIBLE |                    |   |            |        |              |          |           |
| Motion to approve the Treasurer's report for October & November 2010.  | Dan Molner         |                    |   |            |        |              |          |           |
| Second   | Mark Watkins       |                    |   |            |        |              |          |           |
| Approved   | Unanimous          |                    |   |            |        |              |          |           |

#### 5.A. THIRD QUARTER 2010 GRANT AWARD PRESENTATIONS

|   |
|---|
| <p><b>DISCUSSION</b></p> <p>Chair Reid presented grant awards to El Paso County Search and Rescue, the City of Fountain Fire Department, and Ellicott Fire Protection District.</p> |
|---|

#### 5.B. CAPITALIZATION POLICY

|  |
|--|
| <p><b>DISCUSSION</b></p> <p>Treasurer Florek reported that, after the 2009 financial statement audit, Bondi recommended the ESA adopt an asset capitalization policy to more accurately account for any possible capital purchases in the future. Staff developed a draft based in part on the capitalization policies of the City and County, as well as the auditor's recommendations. In general, the policy states that, should the ESA purchase any assets whose value exceeds \$5,000, we will capitalize and depreciate those assets for accounting purposes. He recommended adoption of the policy as presented.</p> |
|--|

| <b>MOTION</b>   | <b>PERSON RESPONSIBLE</b> |
|---|---------------------------|
| Motion to adopt the asset capitalization policy as presented. | John Scorsine             |
| Second  | Mayor Jeri Howells        |
| Approved  | Unanimous                 |

#### 5.C. INSURANCE RENEWAL

| <b>DISCUSSION</b>   |                           |
|---|---------------------------|
| Eileen presented information relating to renewal of the ESA's insurance policies for 2011.                  |                           |
| <b>MOTION</b>   | <b>PERSON RESPONSIBLE</b> |
| Motion to authorize staff to bind the 2011 insurance policies if the total premium does not exceed \$3,250. | Dr. Sharon                |
| Second  | Councilman Tom Gallagher  |
| Approved  | Unanimous                 |

#### 5.D. 2010 ESA FINANCIAL STATEMENT AUDIT PROPOSALS

| <b>DISCUSSION</b>  |                           |
|--|---------------------------|
| Eileen reported that only one bid was received in response to the informal request for proposals (RFP) that was issued on October 22.  |                           |
| <b>MOTION</b>  | <b>PERSON RESPONSIBLE</b> |
| Motion to authorize staff to open and review the one bid that was received, and to notify the bidder that they have been awarded the bid (provided the bid amount is less than the amount included in the 2011 budget for audit services). | John Scorsine             |
| Second   | Dan Molner                |
| Approved   | Unanimous.                |

#### 5.E. SEVERE WEATHER PLAN UPDATE

| <b>DISCUSSION</b>   |                           |
|---|---------------------------|
| Eileen presented information relating to the move to a "level of effort" model for evaluating the contractor's performance during severe weather situations. She presented a memo outlining that plan, including specific changes to the contractor's system status plan, and answered questions from Board members. For the 2010-2011 weather season, the data will be tracked and reported under both models to track its effectiveness and impact on the EMS system. |                           |
| <b>MOTION</b>   | <b>PERSON RESPONSIBLE</b> |
| Motion to implement the plan as presented on a pilot basis for this weather   | T. Wayne Florek           |
| Second  | Dr. Gifford               |
| Approved  | Unanimous                 |

#### 5.F. 2011 MEETING SCHEDULE

| <b>DISCUSSION</b>   |                           |
|---|---------------------------|
| Eileen presented a proposed every-other-month board meeting schedule for 2011.                                |                           |
| <b>MOTION</b>   | <b>PERSON RESPONSIBLE</b> |
| Motion to approve an alternate month meeting schedule for 2011, with the first meeting occurring in February. | Dr. Sharon                |

|          |   |
|----------|---|
| Second   | Dan Molner                                      |
| Approved | Unanimous, with Councilman Gallagher abstaining |

5.G. BOARD MEMBER/STAFF COMMENTS

|   |
|---|
| <b>DISCUSSION</b>   |
| Mark Watkins provided information relating to a new pharmacy, TOC Pharmacy (tocpharmacy.org), providing medications to the poor and uninsured, and requested donations and volunteer assistance. John Scorsine commended AMR on their professionalism and skill, as evidenced by staffs' performance during recent ride-alongs. |

7. ADJOURNMENT

| <b>MOTION</b>     | <b>PERSON RESPONSIBLE</b> |
|-------------------|---------------------------|
| Motion to Adjourn | Chief Carl Tatum          |
| Second            | Dr. Gifford               |
| Approved          | Unanimous                 |

MEETING ADJOURNED AT 3:20 p.m.

DRAFT



#### Board of Directors

Commander Jim Reid, Chair  
 Chief Carl Tatum, Vice-Chair  
 Dan Molner, LCSW, Secretary  
 T. Wayne Florek, Treasurer  
 Chief Tommy Smith  
 Councilmember Randy Purvis  
 (Alternate) Councilmember Tom Gallagher

Marilyn Gifford, M.D.  
 Jack Sharon, M.D.  
 Mayor Jeri Howells  
 Mark Watkins, EMT-P  
 John Scorsine  
 Commissioner Sallie Clark  
 (Alternate) Commissioner Dennis Hisey

## ESA Performance & Compliance Report November & December 2010

### I. ESA COMPLIANCE REVIEW SUMMARY

Pursuant to the Intergovernmental Agreement Concerning the El Paso County Emergency Services Agency ("ESA") dated January 21, 2010, the City of Colorado Springs and El Paso County have created the ESA to oversee an exclusive contract to provide ground emergency ambulance service to the ESA's service area within the City of Colorado Springs and El Paso County. Section 16 of the Ground Emergency Ambulance Services Contract between El Paso County Emergency Services Agency and American Medical Response of Colorado, Inc. ("Contractor"), which was effective January 1, 2009, provides that Contractor agrees that, in the event it fails to meet performance requirements set forth in the Contract, it shall pay assessments in the amount and manner set forth in Exhibit F of the Contract. The assessments represent a reasonable endeavor by the ESA and the Contractor to estimate a fair compensation for the foreseeable damage to the ESA and its residents due to Contractor's failure to meet the performance standards set forth in the Contract. The assessments are in the nature of liquidated damages and are not punitive in nature. Payment by the Contractor of an assessment shall constitute a full release and satisfaction of the particular matter.

In accordance with Section 14 of the contract, the Contractor provided all required performance and compliance reports during the reporting period. The Contractor has reviewed and concurs with the contents of this report.

A representative sampling and subsequent assessment of associated records for Code 3 calls documented in the Contractor's submitted data indicated that records were accurately prepared and factually reported for November and December 2010.

#### A. Assessment Summary

The data provided by the Contractor and reviewed by ESA staff indicated that the Contractor met the contractual response standards included in the contract, and had no incidences of contract Level 0 during November and one incidence in December. The total recommended assessment for November and December 2010 is \$8,450.00.

| Potential & Recommended Assessment Summary              |                   |                   |                   |                   |
|---|-------------------|-------------------|-------------------|-------------------|
| Performance Standard                                    | November 2010     |                   | December 2010     |                   |
|   | Potential         | Recommended       | Potential         | Recommended       |
| Per Call Performance – Exceeding Maximum Response Times | \$3,380.00        | \$3,380.00        | \$4,082.00        | \$4,082.00        |
| Zone Standards (90%) – Urban, Suburban, Rural           | \$0.00            | \$0.00            | \$0.00            | \$0.00            |
| Zone Standards (90%) – Frontier, Wilderness (annual)    | \$0.00            | \$0.00            | \$0.00            | \$0.00            |
| Systemwide Standard (92%)                               | \$0.00            | \$0.00            | \$0.00            | \$0.00            |
| Call Referrals  | \$0.00            | \$0.00            | \$0.00            | \$0.00            |
| Other Assessments (including Level 0)                   | \$0.00            | \$0.00            | \$988.00          | \$988.00          |
| Special Circumstances                                   | \$0.00            | \$0.00            | \$0.00            | \$0.00            |
| Exemptions  | \$780.00          | \$0.00            | \$390.00          | \$0.00            |
| <b>TOTAL:</b>   | <b>\$4,160.00</b> | <b>\$3,380.00</b> | <b>\$5,460.00</b> | <b>\$5,070.00</b> |

## II. CONTRACTOR PERFORMANCE & COMPLIANCE REPORT

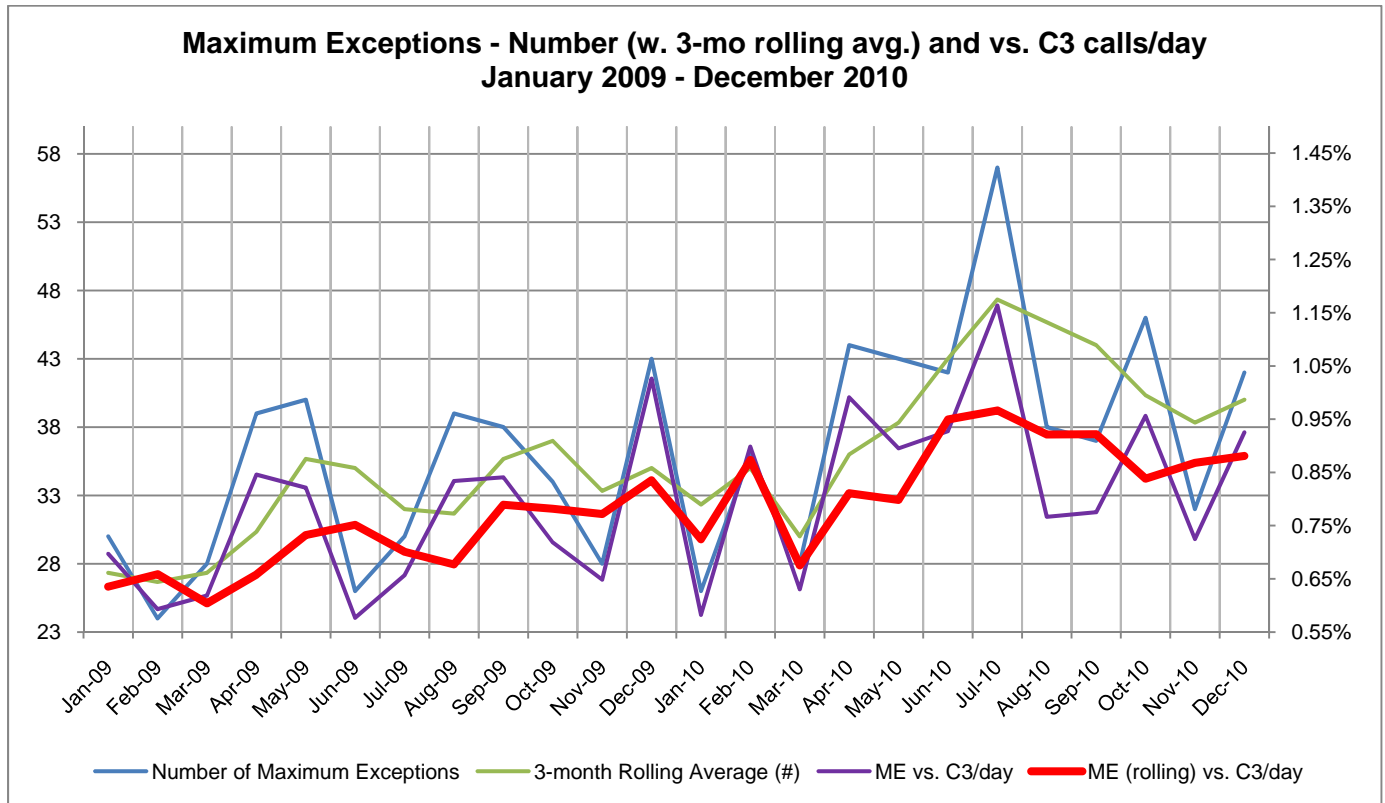
**A. Per Call Performance (F.1.C.1.)** – Following is a list of calls which exceeded the Maximum Response Time allowed in the contract. (Assessment amount F.3.D.)

For November 2010, there were 32 calls that exceeded the Maximum Response Time for their Zone, 31 (96.9%) of which were located within the City of Colorado Springs. The remaining call (3.1%) was located in Manitou Springs. For December 2010, there were 42 calls that exceeded the Maximum Response Time for their Zone, all of which were located within the City of Colorado Springs.

| November 2010 (32)       |                 |        |         |               |                  |                                      |  |
|--------------------------|-----------------|--------|---------|---------------|------------------|--------------------------------------|--|
| Zone                     | Date            | Call # | Maximum | Response Time | Amount in Excess | Potential Assessment (per agreement) | Recommended Assessment (per agreement) |
| Suburban 12              | 11/17/2010      | 142804 | 0:18:00 | 0:19:41       | 0:01:41          | \$52.00                              | \$52.00                                |
| Suburban 12              | 11/26/2010      | 146424 | 0:18:00 | 0:18:20       | 0:00:20          | \$26.00                              | \$26.00                                |
| Suburban 12              | 11/28/2010      | 147310 | 0:18:00 | 0:18:54       | 0:00:54          | \$26.00                              | \$26.00                                |
| <b>Total Suburban 12</b> | <b>3 (9.4%)</b> |        |         |               |                  |                                      |  |
| Urban North 8            | 11/01/2010      | 135824 | 0:12:00 | 0:14:18       | 0:02:18          | \$78.00                              | \$78.00                                |
| Urban Southeast 8        | 11/03/2010      | 137004 | 0:12:00 | 0:12:23       | 0:00:23          | \$26.00                              | \$26.00                                |
| Urban Southwest 8        | 11/04/2010      | 137238 | 0:12:00 | 0:16:18       | 0:04:18          | \$130.00                             | \$130.00                               |
| Urban North 8            | 11/05/2010      | 137566 | 0:12:00 | 0:19:02       | 0:07:02          | \$208.00                             | \$208.00                               |
| Urban Southeast 8        | 11/06/2010      | 138049 | 0:12:00 | 0:12:32       | 0:00:32          | \$26.00                              | \$26.00                                |
| Urban Southeast 8        | 11/06/2010      | 138058 | 0:12:00 | 0:14:46       | 0:02:46          | \$78.00                              | \$78.00                                |
| Urban Southwest 8        | 11/07/2010      | 138415 | 0:12:00 | 0:15:15       | 0:03:15          | \$104.00                             | \$104.00                               |
| Urban Southeast 8        | 11/11/2010      | 140118 | 0:12:00 | 0:12:05       | 0:00:05          | \$26.00                              | \$26.00                                |
| Urban Southeast 8        | 11/11/2010      | 140297 | 0:12:00 | 0:13:52       | 0:01:52          | \$52.00                              | \$52.00                                |
| Urban Southwest 8        | 11/13/2010      | 140896 | 0:12:00 | 0:12:54       | 0:00:54          | \$26.00                              | \$26.00                                |
| Urban Southwest 8        | 11/15/2010      | 141617 | 0:12:00 | 0:23:35       | 0:11:35          | \$312.00                             | \$312.00                               |
| Urban North 8            | 11/16/2010      | 142382 | 0:12:00 | 0:19:39       | 0:07:39          | \$208.00                             | \$208.00                               |
| Urban Southwest 8        | 11/16/2010      | 142426 | 0:12:00 | 0:20:13       | 0:08:13          | \$234.00                             | \$234.00                               |
| Urban Southwest 8        | 11/17/2010      | 142528 | 0:12:00 | 0:12:53       | 0:00:53          | \$26.00                              | \$26.00                                |
| Urban Southwest 8        | 11/17/2010      | 142721 | 0:12:00 | 0:13:43       | 0:01:43          | \$52.00                              | \$52.00                                |
| Urban Southeast 8        | 11/17/2010      | 142821 | 0:12:00 | 0:12:17       | 0:00:17          | \$26.00                              | \$26.00                                |
| Urban Southwest 8        | 11/18/2010      | 142955 | 0:12:00 | 0:12:43       | 0:00:43          | \$26.00                              | \$26.00                                |
| Urban Southwest 8        | 11/18/2010      | 142962 | 0:12:00 | 0:12:28       | 0:00:28          | \$26.00                              | \$26.00                                |

| Zone                 | Date              | Call # | Maximum | Response Time | Amount in Excess | Potential Assessment (per agreement) | Recommended Assessment (per agreement) |
|----------------------|-------------------|--------|---------|---------------|------------------|--------------------------------------|--|
| Urban Southwest 8    | 11/18/2010        | 143217 | 0:12:00 | 0:19:49       | 0:07:49          | \$208.00                             | \$208.00                               |
| Urban Southeast 8    | 11/19/2010        | 143404 | 0:12:00 | 0:13:00       | 0:01:00          | \$26.00                              | \$26.00                                |
| Urban Southwest 8    | 11/19/2010        | 143747 | 0:12:00 | 0:12:30       | 0:00:30          | \$26.00                              | \$26.00                                |
| Urban Southwest 8    | 11/19/2010        | 143815 | 0:12:00 | 0:18:10       | 0:06:10          | \$182.00                             | \$182.00                               |
| Urban Southwest 8    | 11/19/2010        | 143822 | 0:12:00 | 0:16:54       | 0:04:54          | \$130.00                             | \$130.00                               |
| Urban Southeast 8    | 11/20/2010        | 143988 | 0:12:00 | 0:12:41       | 0:00:41          | \$26.00                              | \$26.00                                |
| Urban Southwest 8    | 11/20/2010        | 144207 | 0:12:00 | 0:13:34       | 0:01:34          | \$52.00                              | \$52.00                                |
| Urban North 8        | 11/25/2010        | 146247 | 0:12:00 | 0:21:15       | 0:09:15          | \$260.00                             | \$260.00                               |
| Urban Southwest 8    | 11/25/2010        | 146277 | 0:12:00 | 0:17:23       | 0:05:23          | \$156.00                             | \$156.00                               |
| Urban Southeast 8    | 11/25/2010        | 146280 | 0:12:00 | 0:28:25       | 0:16:25          | \$442.00                             | \$442.00                               |
| Urban Southeast 8    | 11/28/2010        | 147242 | 0:12:00 | 0:15:56       | 0:03:56          | \$104.00                             | \$104.00                               |
| <b>Total Urban 8</b> | <b>29 (90.6%)</b> |        |         |               |                  |                                      |  |
| <b>Assessments</b>   |                   |        |         |               |                  | <b>\$3,380.00</b>                    | <b>\$3,380.00</b>                      |

| December 2010 (42)       |                   |        |         |               |                  |                                      |  |
|--------------------------|-------------------|--------|---------|---------------|------------------|--------------------------------------|--|
| Zone                     | Date              | Call # | Maximum | Response Time | Amount in Excess | Potential Assessment (per agreement) | Recommended Assessment (per agreement) |
| Suburban 12              | 12/06/2010        | 150606 | 0:18:00 | 0:18:49       | 0:00:49          | \$26.00                              | \$26.00                                |
| Suburban 12              | 12/18/2010        | 155822 | 0:18:00 | 0:18:55       | 0:00:55          | \$26.00                              | \$26.00                                |
| Suburban 12              | 12/23/2010        | 158194 | 0:18:00 | 0:19:04       | 0:01:04          | \$52.00                              | \$52.00                                |
| Suburban 12              | 12/30/2010        | 160771 | 0:18:00 | 0:24:44       | 0:06:44          | \$182.00                             | \$182.00                               |
| Suburban 12              | 12/30/2010        | 160773 | 0:18:00 | 0:20:50       | 0:02:50          | \$78.00                              | \$78.00                                |
| Suburban 12              | 12/30/2010        | 160811 | 0:18:00 | 0:32:26       | 0:14:26          | \$390.00                             | \$390.00                               |
| <b>Total Suburban 12</b> | <b>6 (14.3%)</b>  |        |         |               |                  |                                      |  |
| Urban North 8            | 12/02/2010        | 148965 | 0:12:00 | 0:12:28       | 0:00:28          | \$26.00                              | \$26.00                                |
| Urban Southeast 8        | 12/02/2010        | 148982 | 0:12:00 | 0:13:15       | 0:01:15          | \$52.00                              | \$52.00                                |
| Urban Southwest 8        | 12/03/2010        | 149587 | 0:12:00 | 0:12:35       | 0:00:35          | \$26.00                              | \$26.00                                |
| Urban North 8            | 12/03/2010        | 149635 | 0:12:00 | 0:20:06       | 0:08:06          | \$234.00                             | \$234.00                               |
| Urban Southeast 8        | 12/03/2010        | 149687 | 0:12:00 | 0:13:03       | 0:01:03          | \$52.00                              | \$52.00                                |
| Urban Southeast 8        | 12/04/2010        | 149753 | 0:12:00 | 0:12:38       | 0:00:38          | \$26.00                              | \$26.00                                |
| Urban Southwest 8        | 12/04/2010        | 149756 | 0:12:00 | 0:17:45       | 0:05:45          | \$156.00                             | \$156.00                               |
| Urban Southwest 8        | 12/06/2010        | 150592 | 0:12:00 | 0:15:24       | 0:03:24          | \$104.00                             | \$104.00                               |
| Urban Southwest 8        | 12/06/2010        | 150754 | 0:12:00 | 0:12:32       | 0:00:32          | \$26.00                              | \$26.00                                |
| Urban Southwest 8        | 12/06/2010        | 150769 | 0:12:00 | 0:12:17       | 0:00:17          | \$26.00                              | \$26.00                                |
| Urban North 8            | 12/06/2010        | 150795 | 0:12:00 | 0:12:18       | 0:00:18          | \$26.00                              | \$26.00                                |
| Urban Southwest 8        | 12/08/2010        | 151767 | 0:12:00 | 0:13:13       | 0:01:13          | \$52.00                              | \$52.00                                |
| Urban North 8            | 12/13/2010        | 153555 | 0:12:00 | 0:13:14       | 0:01:14          | \$52.00                              | \$52.00                                |
| Urban North 8            | 12/13/2010        | 153617 | 0:12:00 | 0:12:47       | 0:00:47          | \$26.00                              | \$26.00                                |
| Urban North 8            | 12/13/2010        | 153665 | 0:12:00 | 0:12:46       | 0:00:46          | \$26.00                              | \$26.00                                |
| Urban Southwest 8        | 12/14/2010        | 154206 | 0:12:00 | 0:14:34       | 0:02:34          | \$78.00                              | \$78.00                                |
| Urban Southwest 8        | 12/14/2010        | 154207 | 0:12:00 | 0:13:28       | 0:01:28          | \$52.00                              | \$52.00                                |
| Urban North 8            | 12/15/2010        | 154340 | 0:12:00 | 0:18:17       | 0:06:17          | \$182.00                             | \$182.00                               |
| Urban North 8            | 12/15/2010        | 154642 | 0:12:00 | 0:18:09       | 0:06:09          | \$182.00                             | \$182.00                               |
| Urban North 8            | 12/16/2010        | 155128 | 0:12:00 | 0:13:44       | 0:01:44          | \$52.00                              | \$52.00                                |
| Urban North 8            | 12/17/2010        | 155611 | 0:12:00 | 0:12:09       | 0:00:09          | \$26.00                              | \$26.00                                |
| Urban North 8            | 12/17/2010        | 155613 | 0:12:00 | 0:20:41       | 0:08:41          | \$234.00                             | \$234.00                               |
| Urban Southwest 8        | 12/19/2010        | 156410 | 0:12:00 | 0:12:46       | 0:00:46          | \$26.00                              | \$26.00                                |
| Urban Southeast 8        | 12/25/2010        | 158577 | 0:12:00 | 0:15:37       | 0:03:37          | \$104.00                             | \$104.00                               |
| Urban Southwest 8        | 12/25/2010        | 158740 | 0:12:00 | 0:15:23       | 0:03:23          | \$104.00                             | \$104.00                               |
| Urban Southwest 8        | 12/26/2010        | 158864 | 0:12:00 | 0:14:19       | 0:02:19          | \$78.00                              | \$78.00                                |
| Urban Southeast 8        | 12/30/2010        | 160776 | 0:12:00 | 0:12:40       | 0:00:40          | \$26.00                              | \$26.00                                |
| Urban Southeast 8        | 12/30/2010        | 160780 | 0:12:00 | 0:12:07       | 0:00:07          | \$26.00                              | \$26.00                                |
| Urban Southwest 8        | 12/30/2010        | 160781 | 0:12:00 | 0:19:27       | 0:07:27          | \$208.00                             | \$208.00                               |
| Urban Southwest 8        | 12/30/2010        | 160787 | 0:12:00 | 0:21:49       | 0:09:49          | \$260.00                             | \$260.00                               |
| Urban Southeast 8        | 12/30/2010        | 160810 | 0:12:00 | 0:18:09       | 0:06:09          | \$182.00                             | \$182.00                               |
| Urban North 8            | 12/30/2010        | 160814 | 0:12:00 | 0:17:17       | 0:05:17          | \$156.00                             | \$156.00                               |
| Urban Southwest 8        | 12/30/2010        | 160818 | 0:12:00 | 0:18:21       | 0:06:21          | \$182.00                             | \$182.00                               |
| Urban Southwest 8        | 12/30/2010        | 160819 | 0:12:00 | 0:17:09       | 0:05:09          | \$156.00                             | \$156.00                               |
| Urban Southeast 8        | 12/31/2010        | 161038 | 0:12:00 | 0:13:08       | 0:01:08          | \$52.00                              | \$52.00                                |
| Urban Southeast 8        | 12/31/2010        | 161040 | 0:12:00 | 0:13:14       | 0:01:14          | \$52.00                              | \$52.00                                |
| <b>Total Urban 8</b>     | <b>36 (85.7%)</b> |        |         |               |                  |                                      |  |
| <b>Assessments</b>       |                   |        |         |               |                  | <b>\$4,082.00</b>                    | <b>\$4,082.00</b>                      |



**B. Zone Standard – Urban, Suburban and Rural (F.1.C.2.) –** Percentage of calls which meet the Minimum Response Time Standards in Urban, Suburban and Rural zones (90%), reported monthly. (Assessment amount F.3.A.) The contractor exceeded the minimum zone standard in the Urban, Suburban and Rural Zones during both reporting periods.

| Zone                 | November 2010     |                                   |               | December 2010     |                                   |               |
|----------------------|-------------------|-----------------------------------|---------------|-------------------|-----------------------------------|---------------|
|                      | # of Code 3 Calls | # Exceeding Minimum Response Time | Compliance %  | # of Code 3 Calls | # Exceeding Minimum Response Time | Compliance %  |
| Urban 8              | 2,116             | 174                               | 91.78%        | 2,080             | 189                               | 90.91%        |
| Suburban 12          | 746               | 21                                | 97.18%        | 826               | 37                                | 95.52%        |
| Rural 20             | 149               | 1                                 | 99.33%        | 149               | 2                                 | 98.66%        |
| <b>Zone Standard</b> |                   |                                   | <b>90.00%</b> |                   |                                   | <b>90.00%</b> |

**C. Zone Standard – Frontier and Wilderness (F.1.C.2.) -** Percentage of calls which meet the Minimum Response Time Standards in Frontier and Wilderness zones (90%), reported annually (if the number of calls in zone exceeds 100). (Assessment amount F.3.C.)

Response time compliance for Code-3 calls within the Frontier or Wilderness zones is measured on an annual basis because there are not enough Code-3 calls within those zones to measure them on a monthly basis. Each year, Contractor must meet the Minimum Response Time standard for all Code-3 calls within the Frontier or Wilderness zones at least 90% of the time, provided that the Frontier or Wilderness zone has a minimum call volume of 100 calls annually. Response time data shows that the Contractor met the Minimum Response Time standards for Code-3 calls within each of the three Frontier zones during 2010. **Note: There were 49 calls in the Wilderness 45 zone during 2010, which does**

not meet the 100-call annual threshold under the contract; however, summary response time data for that zone is reported below for informational purposes.

|              | Frontier 25 |            |               | Frontier 35 |            |               |
|--------------|-------------|------------|---------------|-------------|------------|---------------|
|              | Calls       | Exceptions | Compliance %  | Calls       | Exceptions | Compliance %  |
| January      | 45          | 0          | 100.00%       | 43          | 2          | 95.35%        |
| February     | 42          | 0          | 100.00%       | 56          | 0          | 100.00%       |
| March        | 47          | 2          | 95.74%        | 63          | 0          | 100.00%       |
| April        | 61          | 0          | 100.00%       | 56          | 1          | 98.21%        |
| May          | 52          | 0          | 100.00%       | 67          | 2          | 97.01%        |
| June         | 41          | 1          | 97.56%        | 52          | 0          | 100.00%       |
| July         | 43          | 1          | 97.67%        | 66          | 3          | 95.45%        |
| August       | 49          | 1          | 97.96%        | 58          | 1          | 98.28%        |
| September    | 31          | 0          | 100.00%       | 58          | 1          | 98.28%        |
| October      | 46          | 1          | 97.83%        | 49          | 2          | 95.92%        |
| November     | 31          | 2          | 93.55%        | 35          | 1          | 97.14%        |
| December     | 44          | 2          | 95.45%        | 50          | 0          | 100.00%       |
| <b>Total</b> | <b>532</b>  | <b>10</b>  | <b>98.12%</b> | <b>653</b>  | <b>13</b>  | <b>98.01%</b> |

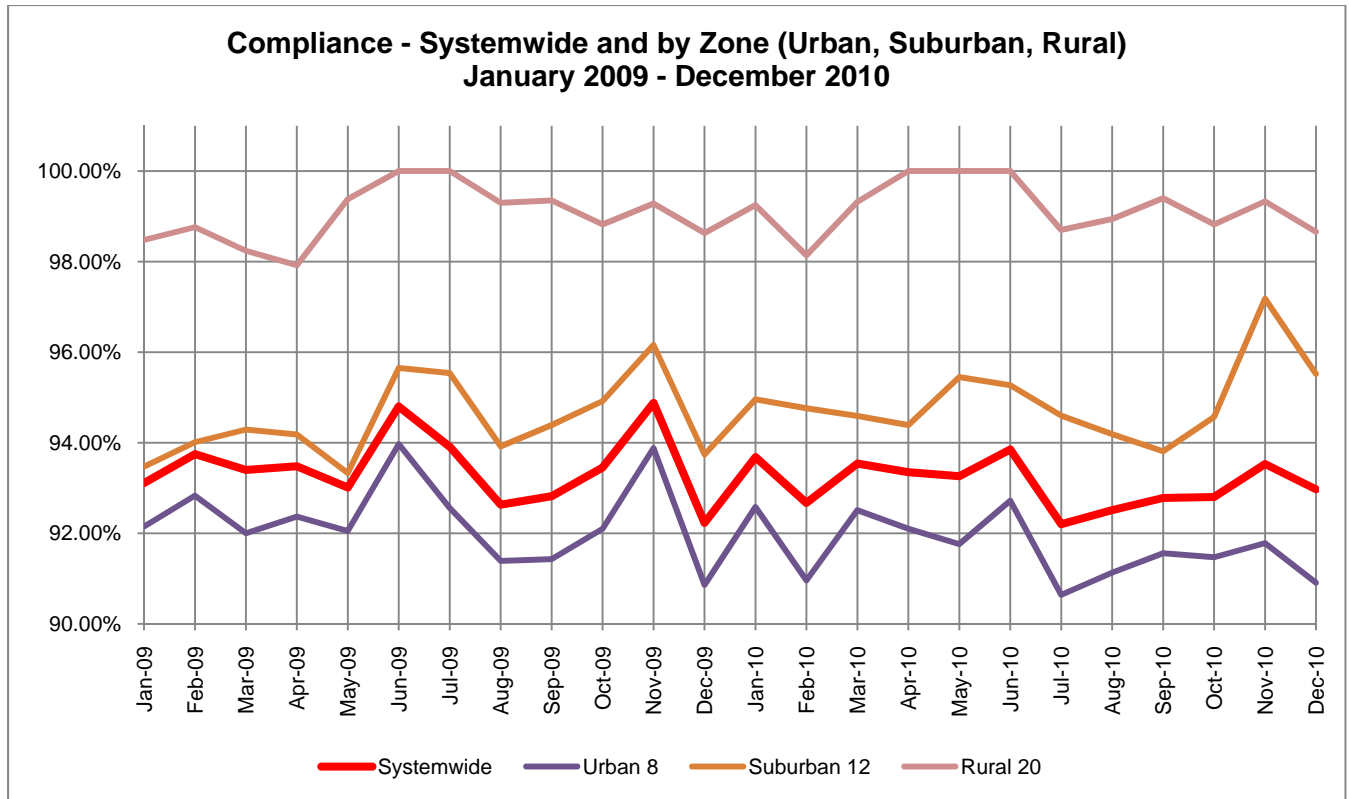
|              | Frontier 45 |            |               | Wilderness 45* (information only) |            |               |
|--------------|-------------|------------|---------------|-----------------------------------|------------|---------------|
|              | Calls       | Exceptions | Compliance %  | Calls                             | Exceptions | Compliance %  |
| January      | 25          | 0          | 100.00%       | 1                                 | 0          | 100.00%       |
| February     | 41          | 2          | 95.12%        | 1                                 | 0          | 100.00%       |
| March        | 27          | 2          | 92.59%        | 1                                 | 0          | 100.00%       |
| April        | 20          | 0          | 100.00%       | 1                                 | 0          | 100.00%       |
| May          | 21          | 0          | 100.00%       | 3                                 | 0          | 100.00%       |
| June         | 24          | 2          | 91.67%        | 13                                | 2          | 84.62%        |
| July         | 20          | 0          | 100.00%       | 9                                 | 0          | 100.00%       |
| August       | 28          | 3          | 89.28%        | 5                                 | 0          | 100.00%       |
| September    | 20          | 1          | 95.00%        | 7                                 | 1          | 85.71%        |
| October      | 24          | 0          | 100.00%       | 3                                 | 1          | 66.67%        |
| November     | 25          | 2          | 92.00%        | 3                                 | 0          | 100.00%       |
| December     | 30          | 0          | 100.00%       | 2                                 | 0          | 100.00%       |
| <b>Total</b> | <b>305</b>  | <b>12</b>  | <b>96.07%</b> | <b>49</b>                         | <b>4</b>   | <b>91.84%</b> |

\* There were 49 calls in the Wilderness 45 zone during 2010, which does not meet the 100-call annual threshold under the contract. Summary response time data for that zone is reported for informational purposes only.

**D. System-wide Standard (F.1.C.3.) – Percentage of calls which meet the Minimum Response Time Standard (92%) (Assessment amount F.3.B.).** The contractor exceeded the system-wide standard during both reporting periods.

| Measure                           | November 2010          | December 2010          |
|-----------------------------------|------------------------|------------------------|
| # of Code 3 Calls                 | 3,105 (3,214)          | 3,174 (3,482)          |
| # Exceeding Minimum Response Time | 201                    | 223                    |
| <b>System-wide Compliance %</b>   | <b>93.53% (93.75%)</b> | <b>92.97% (93.39%)</b> |

Note: The numbers in red in the table above are provided for comparison purposes. They are the numbers that would have been reported under the previous weather model, in which only exceptions are removed from the response time calculations, rather than all calls during a severe weather period.



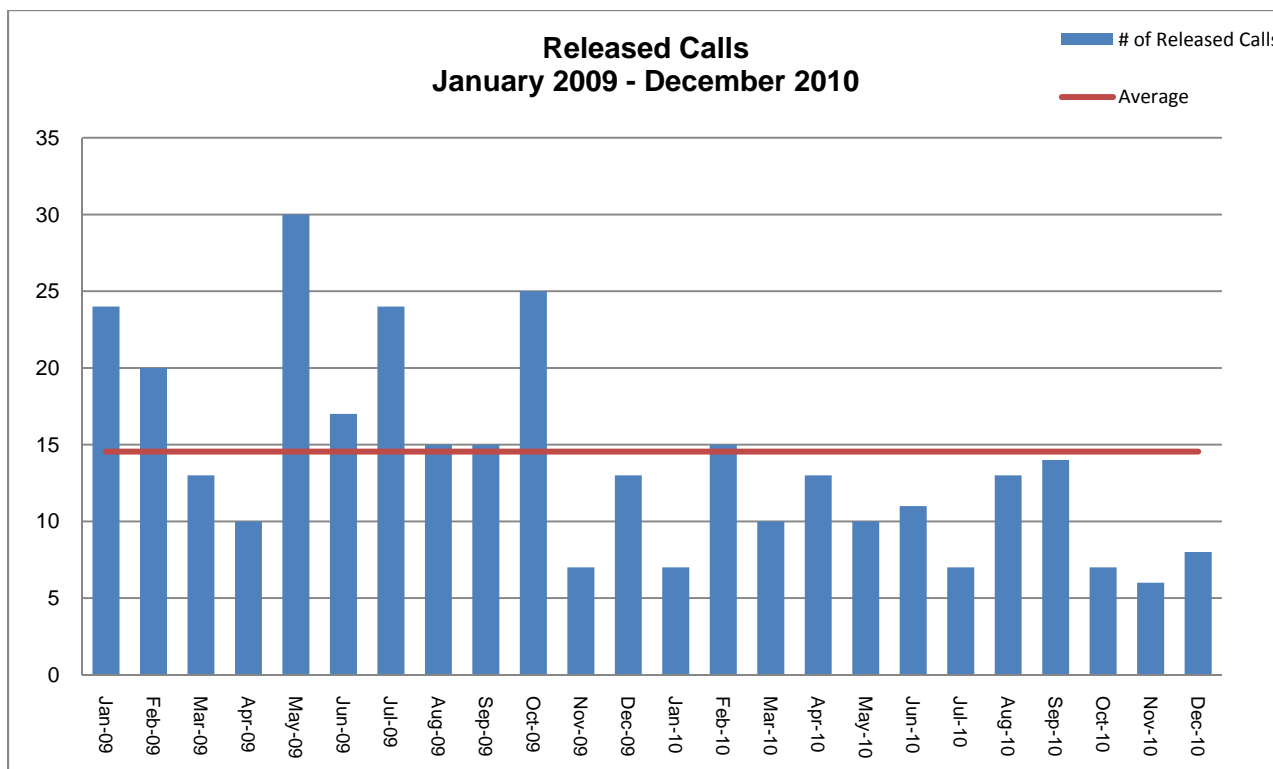
**E. Assessment for Call Referral (F.2.)** – The Contractor is assessed for referring calls to unapproved responders. (Assessment amount F.2.)

The contractor referred 6 calls in November 2010 and 8 calls in December 2010, all of which were referred to Black Forest Fire/Rescue.

In addition, the contractor is assessed for any referred calls for which the responding agency exceeded the maximum response time for the response zone. There were no instances during November or December 2010 where a released call exceeded the maximum response time for the zone.

| November 2010 (6)                             |        |            |                          |               |                   |
|---|--------|------------|--------------------------|---------------|-------------------|
| Response Zone                                 | Call # | Date       | Referred To              | Response Time | Assessment        |
| Frontier 25                                   | 137022 | 11/03/2010 | Black Forest Fire/Rescue | 0:28:21       | \$0.00            |
| Rural 20                                      | 137618 | 11/05/2010 | Black Forest Fire/Rescue | 0:14:53       | \$0.00            |
| Urban North 8                                 | 137898 | 11/05/2010 | Black Forest Fire/Rescue | 0:18:52       | N/A (Code 2 call) |
| Suburban 12                                   | 137906 | 11/05/2010 | Black Forest Fire/Rescue | 0:08:56       | \$0.00            |
| Frontier 25                                   | 141365 | 11/14/2010 | Black Forest Fire/Rescue | 0:13:39       | \$0.00            |
| Frontier 25                                   | 146708 | 11/27/2010 | Black Forest Fire/Rescue | 0:15:16       | \$0.00            |
| <b>November 2010 - Recommended Assessment</b> |        |            |                          |               | <b>\$0.00</b>     |

| December 2010 (8)                             |        |            |                          |               |                   |
|---|--------|------------|--------------------------|---------------|-------------------|
| Response Zone                                 | Call # | Date       | Referred To              | Response Time | Assessment        |
| Frontier 25                                   | 148678 | 12/01/2010 | Black Forest Fire/Rescue | 0:16:58       | \$0.00            |
| Frontier 25                                   | 160143 | 12/29/2010 | Black Forest Fire/Rescue | 0:18:53       | \$0.00            |
| Rural 20                                      | 158488 | 12/24/2010 | Black Forest Fire/Rescue | 0:15:03       | \$0.00            |
| Rural 20                                      | 160849 | 12/30/2010 | Black Forest Fire/Rescue | 0:02:08       | \$0.00            |
| Suburban 12                                   | 150251 | 12/05/2010 | Black Forest Fire/Rescue | 0:06:58       | N/A (Code 2 call) |
| Suburban 12                                   | 151339 | 12/07/2010 | Black Forest Fire/Rescue | 0:15:06       | N/A (Code 2 call) |
| Suburban 12                                   | 156239 | 12/19/2010 | Black Forest Fire/Rescue | 0:11:29       | \$0.00            |
| Urban North 8                                 | 154652 | 12/15/2010 | Black Forest Fire/Rescue | 0:04:20       | \$0.00            |
| <b>December 2010 - Recommended Assessment</b> |        |            |                          |               | <b>\$0.00</b>     |



**F. Other Assessments (F.4.):**

There were no reported or noted instances of ambulance breakdown en route (4.F.B); willfully falsifying at-scene times (F.4.A.) or failure to furnish reports or records (F.4.C.) during either of these reporting periods.

**Contractor Level 0 (F.4.D.)** – Under the current ground emergency ambulance service contract, Contractor Level 0 is defined as:

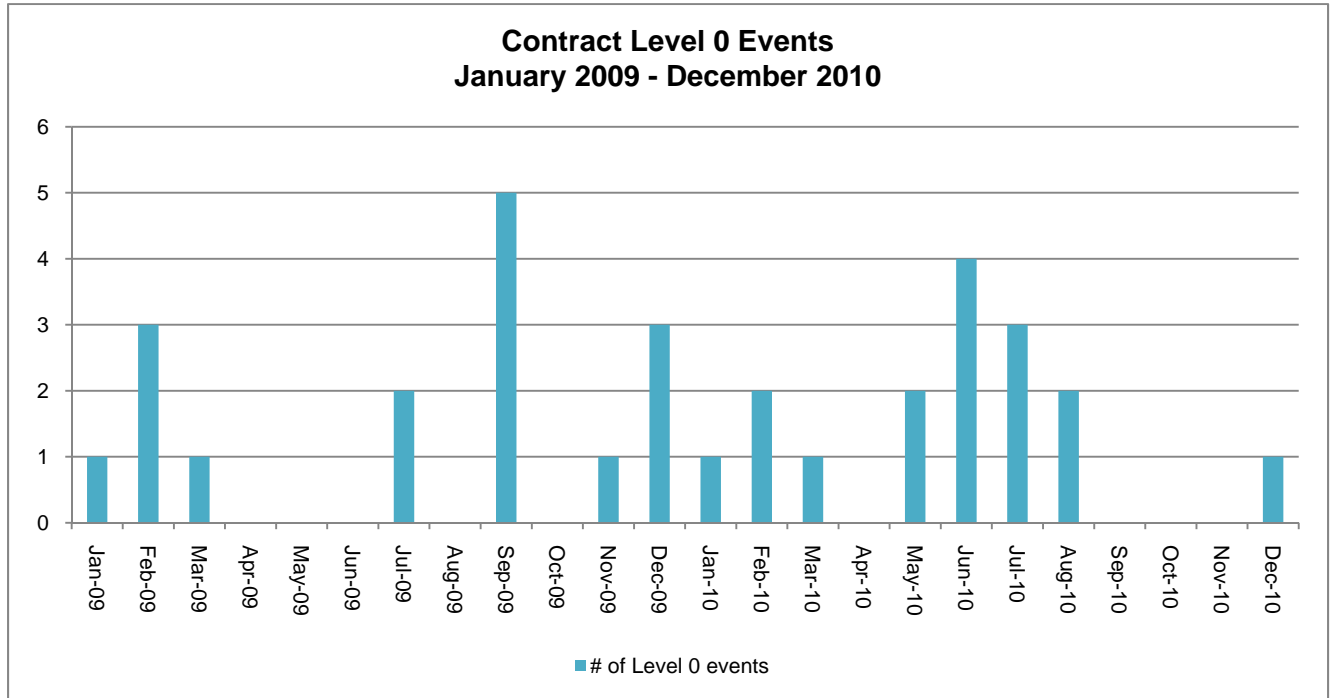
- No available ambulances for dispatch (all ambulances are either committed to calls, out of service due to decontamination procedures, etc., or out of the Service Area)

**AND**

- Contractor exceeds the response time standard in any response zone for any call received during the time contractor has no available ambulances, even if contractor is no longer at Level Zero when the ambulance arrives at the scene.

During November 2010, there were no occurrences of Contractor Level 0 as defined in the contract. There was one instance of Contractor Level 0 during December 2010.

| December 2010 |           |             |             |          |                      |                               |                      |                        |
|---------------|-----------|-------------|-------------|----------|----------------------|-------------------------------|----------------------|------------------------|
| Event #       | Date      | Day of Week | Time of Day | Duration | # of Units Available | # Calls Received during event | Potential Assessment | Recommended Assessment |
| 1             | 12/4/2010 | Saturday    | 19:37       | 28:00    | 14                   | 6                             | \$988.00             | \$988.00               |
| <b>Total</b>  |           |             |             |          |                      |                               | <b>\$988.00</b>      | <b>\$988.00</b>        |



**G. Special Circumstances (F.5.)** – There were no reported events during the reporting period that met the contractual definitions in this section:

- Multiple Units
- Breakdowns on scene
- Upgrades
- Downgrades
- Failure to report at-scene time

**H. Exemptions (F.6.)** – Under the terms of the current contract, exemptions may be granted for “unusual circumstances beyond Contractor’s reasonable control.” These may include, without limitation, unusually severe weather conditions, disasters, difficult or restricted patient access, private roads, change of location, bad address, or other factors as determined in the sole discretion of the ESA. Exempted calls excluded from calculations and do not count as an on-time response.

- A. Responses canceled prior to arrival. (F.6.A.)
- B. Multiple responses to the same incident shall have only the first arriving ambulance response time calculated. (F.6.B.)
- C. Mass casualty incidents – standards and assessments suspended by the ESA during a mass casualty incident. (F.6.C.)
- D. Disasters (F.6.D.)
- E. Travel Restrictions and Road Closures: Response time standards and assessments **WILL** be suspended by the ESA in the affected areas during periods of official travel restrictions or road closures in the COCS, EPC or in adjoining jurisdictions. (F.6.E.)

- F. Good Cause: Inclement Weather (F.6.F.)
- G. Good Cause: Incorrect or inaccurate information received from PSAP or reporting party (F.6.F.)
- H. Good Cause: Data or voice recording or transmission errors (F.6.F.)
- I. Good Cause: Inaccessible calls (F.6.F.)
- J. Good Cause: Rural transport by a closer agency (F.6.F.)
- K. Good Cause: Rendezvous (F.6.F.)
- L. Good Cause: Distance (only to Wilderness zone) (F.6.F.)
- M. Good Cause: Collisions (F.6.F.)

Pursuant to the level of effort severe weather model proposed to be tracked during the 2010-2011 winter season, the contractor added resources (either one or two ambulances depending on the day of the week and time of day) during agreed-upon periods of severe weather. In consideration of the added resources, response time data for all calls (exceptions or not) have been removed from compliance calculations for the following periods, and the elimination of these calls is reflected in the response time calculations contained in other sections of this report.

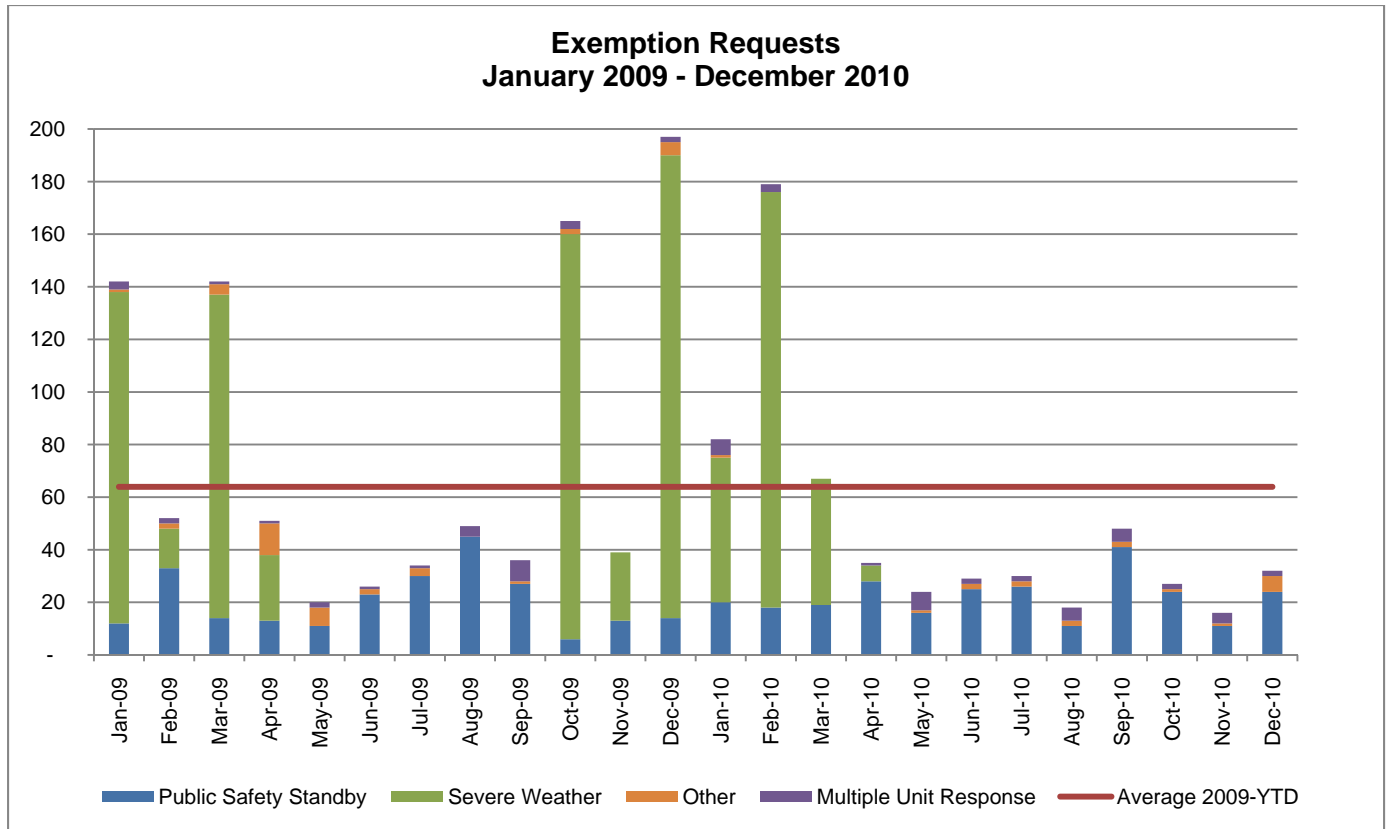
| Level of Effort Model<br>Severe Weather Periods |            |            |          |          |             |            |                   |
|---|------------|------------|----------|----------|-------------|------------|-------------------|
| Start Date                                      | Start Time | End Date   | End Time | Duration | Total Calls | Exceptions | On-time responses |
| <b>November 2010</b>                            |            |            |          |          |             |            |                   |
| 11/9/2010                                       | 19:10      | 11/10/2010 | 02:00    | 06:50    | 30          | 2          | 28                |
| 11/28/2010                                      | 21:52      | 11/29/2010 | 13:30    | 15:35    | 79          | 19         | 60                |
| <b>December 2010</b>                            |            |            |          |          |             |            |                   |
| 12/17/2010                                      | 02:30      | 12/17/2010 | 16:15    | 13:45    | 55          | 5          | 50                |
| 12/17/2010                                      | 20:15      | 12/18/2010 | 03:30    | 07:15    | 36          | 5          | 31                |
| 12/22/2010                                      | 19:00      | 12/23/2010 | 05:15    | 10:15    | 43          | 7          | 36                |
| 12/30/2010                                      | 16:00      | 12/31/2010 | 23:59    | 32:00    | 174         | 81         | 93                |

For the month of November 2010, the Contractor has requested that 16 calls be exempted from the data to determine compliance with performance standards as required under the current contract. For the month of December 2010, the Contractor has requested that 32 Code 3 calls be exempted. The ESA must determine if these specific calls should be exempted. The reasons for each exemption are listed below and have been verified by staff. If the ESA Board chooses to disallow any or all of the exemptions indicated, then the performance reports must be recalculated to yield more precise results.

| November 2010<br>Exempted Calls (16) |            |        |                       |                      |                     |                      |                        |
|--------------------------------------|------------|--------|-----------------------|----------------------|---------------------|----------------------|------------------------|
| Zone                                 | Date       | Call # | Maximum Response Time | Actual Response Time | Amount Over Maximum | Potential Assessment | Recommended Assessment |
| <b>Public Safety Standby (11)</b>    |            |        |                       |                      |                     |                      |                        |
| Suburban 12                          | 11/3/2010  | 136636 | 0:18:00               | 00:14.06             | 0:00:00             | \$0.00               | \$0.00                 |
| Suburban 12                          | 11/4/2010  | 137527 | 0:18:00               | 00:14.47             | 0:00:00             | \$0.00               | \$0.00                 |
| Urban North 8                        | 11/4/2010  | 137533 | 0:12:00               | 00:15.44             | 0:03:44             | \$104.00             | \$0.00                 |
| Suburban 12                          | 11/5/2010  | 137883 | 0:18:00               | 00:12.16             | 0:00:00             | \$0.00               | \$0.00                 |
| Urban Southwest 8                    | 11/5/2010  | 137887 | 0:12:00               | 00:20.03             | 0:08:03             | \$234.00             | \$0.00                 |
| Urban Southeast 8                    | 11/6/2010  | 138007 | 0:12:00               | 00:11.46             | 0:00:00             | \$0.00               | \$0.00                 |
| Urban Southwest 8                    | 11/9/2010  | 139303 | 0:12:00               | 00:08.54             | 0:00:00             | \$0.00               | \$0.00                 |
| Suburban 12                          | 11/9/2010  | 139313 | 0:18:00               | 00:15.43             | 0:00:00             | \$0.00               | \$0.00                 |
| Urban Southwest 8                    | 11/10/2010 | 139727 | 0:12:00               | 00:14.59             | 0:02:59             | \$78.00              | \$0.00                 |
| Urban North 8                        | 11/10/2010 | 139728 | 0:12:00               | 00:09.39             | 0:00:00             | \$0.00               | \$0.00                 |
| Urban North 8                        | 11/10/2010 | 139730 | 0:12:00               | 00:16.12             | 0:04:12             | \$130.00             | \$0.00                 |

| Zone  | Date       | Call # | Maximum Response Time | Actual Response Time | Amount Over Maximum | Potential Assessment | Recommended Assessment |
|---|------------|--------|-----------------------|----------------------|---------------------|----------------------|------------------------|
| <b>Multiple Responses to Incident (4)</b>   |            |        |                       |                      |                     |                      |                        |
| Suburban 12                                 | 11/12/2010 | 140708 | 0:18:00               | 00:22.08             | 0:04:08             | \$130.00             | \$0.00                 |
| Suburban 12                                 | 11/13/2010 | 141146 | 0:18:00               | 00:13.22             | 0:00:00             | \$0.00               | \$0.00                 |
| Urban Southeast 8                           | 11/15/2010 | 141657 | 0:12:00               | 00:09.33             | 0:00:00             | \$0.00               | \$0.00                 |
| Urban Southwest 8                           | 11/19/2010 | 143820 | 0:12:00               | 00:11.23             | 0:00:00             | \$0.00               | \$0.00                 |
| <b>Inaccurate Information from PSAP (1)</b> |            |        |                       |                      |                     |                      |                        |
| Urban Southwest 8                           | 11/20/2010 | 144206 | 0:12:00               | 00:15.13             | 0:03:13             | \$104.00             | \$0.00                 |
| <b>Total</b>                                |            |        |                       |                      |                     | <b>\$780.00</b>      | <b>\$0.00</b>          |

| <b>December 2010 Exempted Calls (32)</b>  |            |        |                       |                      |                     |                      |                        |
|---|------------|--------|-----------------------|----------------------|---------------------|----------------------|------------------------|
| Zone                                      | Date       | Call # | Maximum Response Time | Actual Response Time | Amount Over Maximum | Potential Assessment | Recommended Assessment |
| <b>Public Safety Standby (24)</b>         |            |        |                       |                      |                     |                      |                        |
| Urban North 8                             | 12/1/2010  | 148478 | 0:12:00               | 00:08.13             | 0:00:00             | \$0.00               | \$0.00                 |
| Urban Southwest 8                         | 12/1/2010  | 148535 | 0:12:00               | 00:08.38             | 0:00:00             | \$0.00               | \$0.00                 |
| Urban Southwest 8                         | 12/1/2010  | 148548 | 0:12:00               | 00:10.32             | 0:00:00             | \$0.00               | \$0.00                 |
| Urban Southwest 8                         | 12/1/2010  | 148553 | 0:12:00               | 00:10.05             | 0:00:00             | \$0.00               | \$0.00                 |
| Urban North 8                             | 12/1/2010  | 148593 | 0:12:00               | 00:10.10             | 0:00:00             | \$0.00               | \$0.00                 |
| Urban Southwest 8                         | 12/4/2010  | 149774 | 0:12:00               | 00:12.38             | 0:00:38             | \$26.00              | \$0.00                 |
| Urban Southeast 8                         | 12/6/2010  | 150583 | 0:12:00               | 00:08.04             | 0:00:00             | \$0.00               | \$0.00                 |
| Urban Southwest 8                         | 12/6/2010  | 150584 | 0:12:00               | 00:11.45             | 0:00:00             | \$0.00               | \$0.00                 |
| Urban North 8                             | 12/9/2010  | 151987 | 0:12:00               | 00:09.12             | 0:00:00             | \$0.00               | \$0.00                 |
| Urban Southwest 8                         | 12/9/2010  | 151988 | 0:12:00               | 00:08.03             | 0:00:00             | \$0.00               | \$0.00                 |
| Urban Southeast 8                         | 12/9/2010  | 151993 | 0:12:00               | 00:10.06             | 0:00:00             | \$0.00               | \$0.00                 |
| Urban North 8                             | 12/9/2010  | 151995 | 0:12:00               | 00:10.45             | 0:00:00             | \$0.00               | \$0.00                 |
| Urban Southeast 8                         | 12/9/2010  | 152076 | 0:12:00               | 00:09.10             | 0:00:00             | \$0.00               | \$0.00                 |
| Suburban 12                               | 12/9/2010  | 152082 | 0:18:00               | 00:17.30             | 0:00:00             | \$0.00               | \$0.00                 |
| Urban North 8                             | 12/10/2010 | 152591 | 0:12:00               | 00:11.10             | 0:00:00             | \$0.00               | \$0.00                 |
| Urban Southwest 8                         | 12/10/2010 | 152595 | 0:12:00               | 00:10.32             | 0:00:00             | \$0.00               | \$0.00                 |
| Suburban 12                               | 12/10/2010 | 152604 | 0:18:00               | 00:21.53             | 00:03.53            | \$104.00             | \$0.00                 |
| Urban Southeast 8                         | 12/10/2010 | 152606 | 0:12:00               | 00:08.59             | 0:00:00             | \$0.00               | \$0.00                 |
| Urban Southeast 8                         | 12/10/2010 | 152612 | 0:12:00               | 00:15.36             | 00:03.36            | \$104.00             | \$0.00                 |
| Urban Southwest 8                         | 12/10/2010 | 152641 | 0:12:00               | 00:11.45             | 0:00:00             | \$0.00               | \$0.00                 |
| Urban Southwest 8                         | 12/15/2010 | 154739 | 0:12:00               | 00:08.05             | 0:00:00             | \$0.00               | \$0.00                 |
| Urban Southwest 8                         | 12/16/2010 | 154784 | 0:12:00               | 00:09.07             | 0:00:00             | \$0.00               | \$0.00                 |
| Urban Southeast 8                         | 12/23/2010 | 158109 | 0:12:00               | 00:13.03             | 00:01.03            | \$52.00              | \$0.00                 |
| Urban Southwest 8                         | 12/23/2010 | 158128 | 0:12:00               | 00:08.04             | 0:00:00             | \$0.00               | \$0.00                 |
| <b>Multiple Responses to Incident (2)</b> |            |        |                       |                      |                     |                      |                        |
| Suburban 12                               | 12/3/2010  | 149647 | 0:18:00               | 00:12.25             | 0:00:00             | \$0.00               | \$0.00                 |
| Suburban 12                               | 12/15/2010 | 154554 | 0:18:00               | 00:13.23             | 0:00:00             | \$0.00               | \$0.00                 |
| <b>Mass Casualty Incident (6)</b>         |            |        |                       |                      |                     |                      |                        |
| Urban North 8                             | 12/22/2010 | 157514 | 0:12:00               | 00:08.38             | 0:00:00             | \$0.00               | \$0.00                 |
| Suburban 12                               | 12/22/2010 | 157517 | 0:18:00               | 00:16.01             | 0:00:00             | \$0.00               | \$0.00                 |
| Urban Southeast 8                         | 12/22/2010 | 157521 | 0:12:00               | 00:15.45             | 00:03.45            | \$104.00             | \$0.00                 |
| Urban Southwest 8                         | 12/30/2010 | 160640 | 0:12:00               | 00:09.21             | 0:00:00             | \$0.00               | \$0.00                 |
| Urban Southwest 8                         | 12/30/2010 | 160646 | 0:12:00               | 00:11.12             | 0:00:00             | \$0.00               | \$0.00                 |
| Urban North 8                             | 12/30/2010 | 160663 | 0:12:00               | 00:09.16             | 0:00:00             | \$0.00               | \$0.00                 |
| <b>Total</b>                              |            |        |                       |                      |                     | <b>\$390.00</b>      | <b>\$0.00</b>          |



I. **Urban Equity** – Response time analysis confirms that the contractor met or surpassed the 90% performance standard in all but one of the Urban Zones during one reporting period. Note: The data below is reported for informational purposes only. Under the current contract, a performance standard for individual Urban sub-zones has not been established.

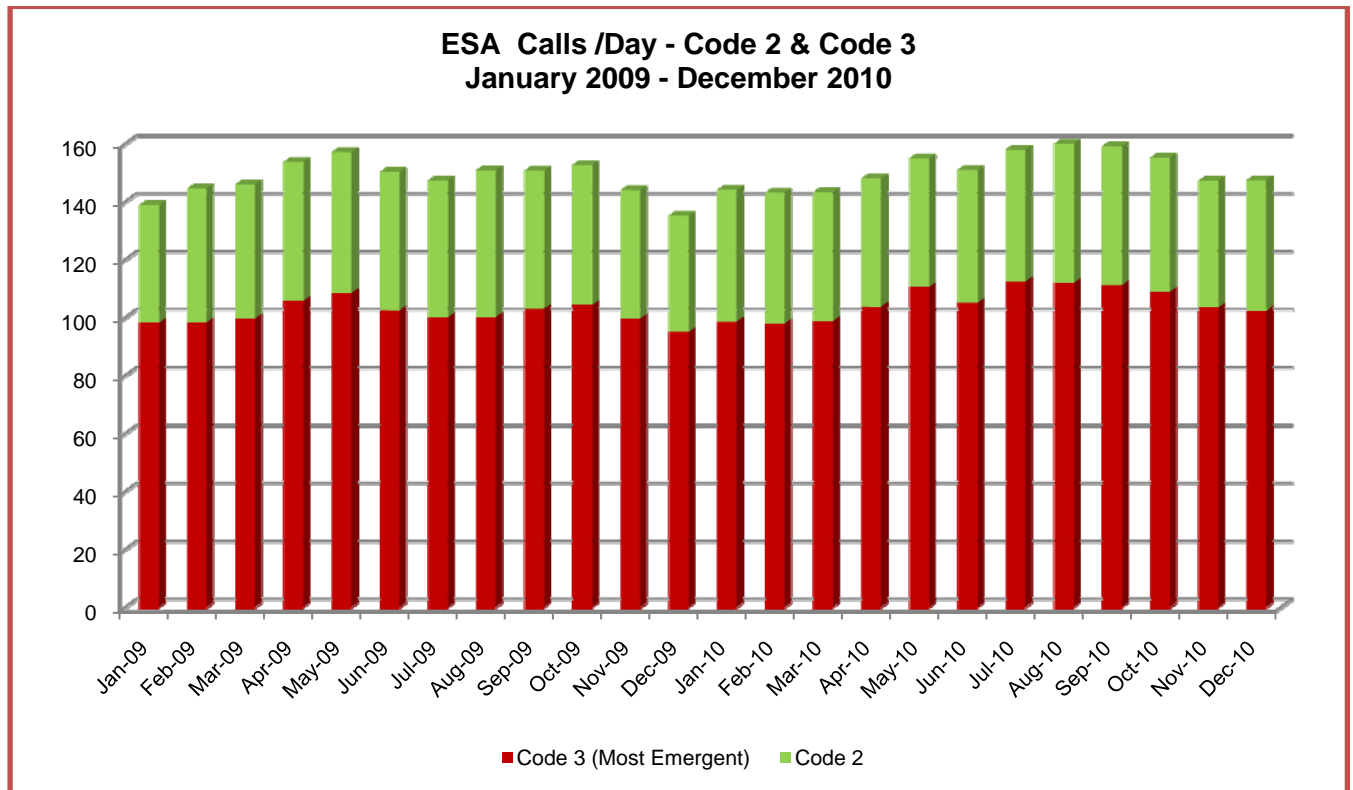
| Zone              | November 2010 |                                   |               | December 2010 |                                   |               | Performance Standard |
|-------------------|---------------|-----------------------------------|---------------|---------------|-----------------------------------|---------------|----------------------|
|                   | Code 3 Calls  | # Exceeding Minimum Response Time | Compliance %  | Code 3 Calls  | # Exceeding Minimum Response Time | Compliance %  |                      |
| Urban North 8     | 658           | 61                                | 90.73%        | 685           | 72                                | 89.49%        | 90.00%               |
| Urban Southeast 8 | 723           | 53                                | 92.67%        | 663           | 50                                | 92.46%        |                      |
| Urban Southwest 8 | 735           | 60                                | 91.84%        | 725           | 60                                | 91.72%        |                      |
| <b>TOTAL</b>      | <b>2,116</b>  | <b>174</b>                        | <b>91.78%</b> | <b>2,073</b>  | <b>18</b>                         | <b>91.22%</b> |                      |

J. **Code 2 Performance Summary**

| Zone         | November 2010     |                                   |               | December 2010     |                                   |               |
|--------------|-------------------|-----------------------------------|---------------|-------------------|-----------------------------------|---------------|
|              | # of Code 2 Calls | # Exceeding Maximum Response Time | Compliance %  | # of Code 2 Calls | # Exceeding Maximum Response Time | Compliance %  |
| Urban 8      | 1,005             | 180                               | 92.09%        | 1,080             | 219                               | 79.72%        |
| Suburban 12  | 255               | 22                                | 91.37%        | 262               | 38                                | 85.50%        |
| Rural 20     | 28                | 0                                 | 100.00%       | 29                | 2                                 | 93.10%        |
| Frontier 25  | 18                | 0                                 | 100.00%       | 17                | 0                                 | 100.00%       |
| Frontier 35  | 3                 | 0                                 | 100.00%       | 4                 | 0                                 | 100.00%       |
| Frontier 45  | 2                 | 0                                 | 100.00%       | 4                 | 0                                 | 100.00%       |
| <b>TOTAL</b> | <b>1,311</b>      | <b>202</b>                        | <b>84.59%</b> | <b>1,396</b>      | <b>259</b>                        | <b>81.45%</b> |

**K. Calls vs. Transports (separated by Code 3/Code 2)–**

|                      | Total Calls | Code 3 Calls | % of All Calls | Code 3 Transports | Code 3 Transport % | Code 2 Calls | % of All Calls | Code 2 Transports | Code 2 Transport % |
|----------------------|-------------|--------------|----------------|-------------------|--------------------|--------------|----------------|-------------------|--------------------|
| <b>November 2010</b> | 4,416       | 3,105        | 70.31%         | 2,035             | 65.54%             | 1,311        | 29.69%         | 888               | 67.73%             |
| <b>December 2010</b> | 4,562       | 3,174        | 69.57%         | 2,042             | 64.33%             | 1,388        | 30.42%         | 929               | 66.93%             |



**L. Major Condition/Complaint Summary**

| <b>November 2010<br/>MEDICAL CALLS/TRANSPORTS</b> |             |               |             |                 |            |               |            |                 |
|---|-------------|---------------|-------------|-----------------|------------|---------------|------------|-----------------|
|   | Code 3      |               |             |                 | Code 2     |               |            |                 |
|   | Calls       | % of Calls    | Transports  | % of Transports | Calls      | % of Calls    | Transports | % of Transports |
| Fainting/Unconscious/Unknown                      | 409         | 9.26%         | 252         | 8.62%           | 50         | 1.13%         | 27         | 0.92%           |
| Breathing Problems                                | 308         | 6.97%         | 229         | 7.83%           | 12         | 0.27%         | 7          | 0.24%           |
| Chest Pain  | 231         | 5.23%         | 202         | 6.91%           | 17         | 0.38%         | 13         | 0.44%           |
| Sick Person-Multiple Complaints                   | 171         | 3.87%         | 139         | 4.76%           | 201        | 4.55%         | 158        | 5.41%           |
| Convulsions-Seizures                              | 133         | 3.01%         | 102         | 3.49%           | 69         | 1.56%         | 46         | 1.57%           |
| Psychiatric-Suicide Attempt                       | 100         | 2.26%         | 77          | 2.63%           | 31         | 0.70%         | 23         | 0.79%           |
| Abdominal Pain                                    | 74          | 1.68%         | 67          | 2.29%           | 34         | 0.77%         | 27         | 0.92%           |
| Heart Problems                                    | 67          | 1.52%         | 62          | 2.12%           | 8          | 0.18%         | 7          | 0.24%           |
| Stroke  | 62          | 1.40%         | 49          | 1.68%           | 4          | 0.09%         | 4          | 0.14%           |
| Diabetic Problems                                 | 44          | 1.00%         | 24          | 0.82%           | 13         | 0.29%         | 8          | 0.27%           |
| Trans-Interfacility-Palliative                    | 34          | 0.77%         | 34          | 1.16%           | 59         | 1.34%         | 57         | 1.95%           |
| Allergies-Envenomations                           | 21          | 0.48%         | 16          | 0.55%           | 3          | 0.07%         | 2          | 0.07%           |
| Pregnancy   | 13          | 0.29%         | 11          | 0.38%           | 5          | 0.11%         | 5          | 0.17%           |
| Headache  | 6           | 0.14%         | 5           | 0.17%           | 18         | 0.41%         | 13         | 0.44%           |
| Back Pain   | 4           | 0.09%         | 4           | 0.14%           | 30         | 0.68%         | 28         | 0.96%           |
| <b>Total</b>                                      | <b>1677</b> | <b>37.98%</b> | <b>1273</b> | <b>43.55%</b>   | <b>554</b> | <b>12.55%</b> | <b>425</b> | <b>14.54%</b>   |

| November 2010<br>TRAUMA CALLS/TRANSPORTS |             |               |            |                 |            |              |            |                 |
|--|-------------|---------------|------------|-----------------|------------|--------------|------------|-----------------|
|  | Code 3      |               |            |                 | Code 2     |              |            |                 |
|  | Calls       | % of Calls    | Transports | % of Transports | Calls      | % of Calls   | Transports | % of Transports |
| Traffic Accident                         | 421         | 9.53%         | 176        | 6.02%           | 68         | 1.54%        | 42         | 1.44%           |
| Falls                                    | 273         | 6.18%         | 188        | 6.43%           | 143        | 3.24%        | 105        | 3.59%           |
| Overdose-Poisoning                       | 189         | 4.28%         | 123        | 4.21%           | 37         | 0.84%        | 29         | 0.99%           |
| Assault or Sexual Assault                | 136         | 3.08%         | 55         | 1.88%           | 12         | 0.27%        | 6          | 0.21%           |
| Hemorrhage-Lacerations                   | 91          | 2.06%         | 67         | 2.29%           | 9          | 0.20%        | 5          | 0.17%           |
| Cardiac/Respiratory Arrest               | 64          | 1.45%         | 24         | 0.82%           | 5          | 0.11%        | 1          | 0.03%           |
| Traumatic Injuries (NOS)                 | 57          | 1.29%         | 36         | 1.23%           | 23         | 0.52%        | 19         | 0.65%           |
| Carbon Monoxide-Hazmat                   | 46          | 1.04%         | 1          | 0.03%           | 16         | 0.36%        | 0          | 0.00%           |
| Choking                                  | 41          | 0.93%         | 35         | 1.20%           | 8          | 0.18%        | 1          | 0.03%           |
| Gunshot/Stabbing                         | 16          | 0.36%         | 8          | 0.27%           | 0          | 0.00%        | 0          | 0.00%           |
| Burns-Scalds                             | 7           | 0.16%         | 2          | 0.07%           | 2          | 0.05%        | 1          | 0.03%           |
| Heat-Cold Exposure                       | 6           | 0.14%         | 4          | 0.14%           | 0          | 0.00%        | 0          | 0.00%           |
| Animal Bites-Attacks                     | 4           | 0.09%         | 0          | 0.00%           | 0          | 0.00%        | 0          | 0.00%           |
| Eye Injuries                             | 3           | 0.07%         | 2          | 0.07%           | 5          | 0.11%        | 3          | 0.10%           |
| Electrocution/Lightning                  | 1           | 0.02%         | 0          | 0.00%           | 0          | 0.00%        | 0          | 0.00%           |
| <b>Total</b>                             | <b>1355</b> | <b>30.68%</b> | <b>721</b> | <b>24.67%</b>   | <b>328</b> | <b>7.43%</b> | <b>212</b> | <b>7.25%</b>    |

| November 2010<br>OTHER CALLS/TRANSPORTS |           |            |            |                 |            |            |            |                 |
|---|-----------|------------|------------|-----------------|------------|------------|------------|-----------------|
|   | Code 3    |            |            |                 | Code 2     |            |            |                 |
|   | Calls     | % of Calls | Transports | % of Transports | Calls      | % of Calls | Transports | % of Transports |
| Law Enforcement Request                 | 56        | 1.27%      | 34         | 1.16%           | 399        | 9.04%      | 247        | 8.45%           |
| Medical-Call Box Alarm                  | 12        | 0.27%      | 5          | 0.17%           | 1          | 0.02%      | 1          | 0.03%           |
| Standby-Public Safety                   | 5         | 0.11%      | 2          | 0.07%           | 26         | 0.59%      | 3          | 0.10%           |
| Standby-Dedicated                       | 0         | 0.00%      | 0          | 0.00%           | 3          | 0.07%      | 0          | 0.00%           |
| <b>Total</b>                            | <b>73</b> | <b>0</b>   | <b>41</b>  | <b>0</b>        | <b>429</b> | <b>0</b>   | <b>251</b> | <b>0</b>        |

| December 2010<br>MEDICAL CALLS/TRANSPORTS |             |               |             |                 |            |               |            |                 |
|---|-------------|---------------|-------------|-----------------|------------|---------------|------------|-----------------|
|   | Code 3      |               |             |                 | Code 2     |               |            |                 |
|   | Calls       | % of Calls    | Transports  | % of Transports | Calls      | % of Calls    | Transports | % of Transports |
| Fainting/Unconscious/Unknown              | 423         | 9.24%         | 253         | 8.50%           | 87         | 1.90%         | 44         | 1.48%           |
| Breathing Problems                        | 290         | 6.34%         | 222         | 7.45%           | 13         | 0.28%         | 10         | 0.34%           |
| Chest Pain                                | 250         | 5.46%         | 219         | 7.35%           | 29         | 0.63%         | 22         | 0.74%           |
| Sick Person-Multiple Complaints           | 210         | 4.59%         | 165         | 5.54%           | 229        | 5.00%         | 190        | 6.38%           |
| Convulsions-Seizures                      | 122         | 2.67%         | 91          | 3.06%           | 65         | 1.42%         | 52         | 1.75%           |
| Psychiatric-Suicide Attempt               | 108         | 2.36%         | 86          | 2.89%           | 30         | 0.66%         | 25         | 0.84%           |
| Abdominal Pain                            | 70          | 1.53%         | 60          | 2.01%           | 34         | 0.74%         | 29         | 0.97%           |
| Heart Problems                            | 68          | 1.49%         | 57          | 1.91%           | 4          | 0.09%         | 3          | 0.10%           |
| Diabetic Problems                         | 57          | 1.25%         | 24          | 0.81%           | 17         | 0.37%         | 7          | 0.24%           |
| Stroke                                    | 55          | 1.20%         | 47          | 1.58%           | 8          | 0.17%         | 8          | 0.27%           |
| Trans-Interfacility-Palliative            | 42          | 0.92%         | 42          | 1.41%           | 64         | 1.40%         | 62         | 2.08%           |
| Allergies-Envenomations                   | 26          | 0.57%         | 17          | 0.57%           | 6          | 0.13%         | 4          | 0.13%           |
| Pregnancy                                 | 25          | 0.55%         | 22          | 0.74%           | 4          | 0.09%         | 4          | 0.13%           |
| Back Pain                                 | 7           | 0.15%         | 5           | 0.17%           | 27         | 0.59%         | 25         | 0.84%           |
| Headache                                  | 7           | 0.15%         | 5           | 0.17%           | 17         | 0.37%         | 15         | 0.50%           |
| <b>Total</b>                              | <b>1760</b> | <b>38.46%</b> | <b>1315</b> | <b>44.16%</b>   | <b>634</b> | <b>13.85%</b> | <b>500</b> | <b>16.79%</b>   |

| December 2010<br>TRAUMA CALLS/TRANSPORTS |             |               |            |                 |            |              |            |                 |
|--|-------------|---------------|------------|-----------------|------------|--------------|------------|-----------------|
|  | Code 3      |               |            |                 | Code 2     |              |            |                 |
|  | Calls       | % of Calls    | Transports | % of Transports | Calls      | % of Calls   | Transports | % of Transports |
| Traffic Accident Total                   | 490         | 10.71%        | 195        | 6.55%           | 71         | 1.55%        | 43         | 1.44%           |
| Falls Total                              | 259         | 5.66%         | 167        | 5.61%           | 135        | 2.95%        | 91         | 3.06%           |
| Overdose-Poisoning Total                 | 162         | 3.54%         | 112        | 3.76%           | 33         | 0.72%        | 19         | 0.64%           |
| Assault or Sexual Assault Total          | 140         | 3.06%         | 69         | 2.32%           | 17         | 0.37%        | 7          | 0.24%           |
| Hemorrhage-Lacerations Total             | 105         | 2.29%         | 80         | 2.69%           | 4          | 0.09%        | 2          | 0.07%           |
| Cardiac/Respiratory Arrest Total         | 76          | 1.66%         | 21         | 0.71%           | 3          | 0.07%        | 0          | 0.00%           |
| Traumatic Injuries (NOS) Total           | 49          | 1.07%         | 29         | 0.97%           | 21         | 0.46%        | 14         | 0.47%           |
| Carbon Monoxide-Hazmat Total             | 45          | 0.98%         | 1          | 0.03%           | 14         | 0.31%        | 1          | 0.03%           |
| Choking Total                            | 18          | 0.39%         | 9          | 0.30%           | 5          | 0.11%        | 1          | 0.03%           |
| Gunshot/Stabbing Total                   | 15          | 0.33%         | 10         | 0.34%           | 1          | 0.02%        | 1          | 0.03%           |
| Burns-Scalds Total                       | 5           | 0.11%         | 4          | 0.13%           | 7          | 0.15%        | 5          | 0.17%           |
| Animal Bites-Attacks Total               | 3           | 0.07%         | 2          | 0.07%           | 0          | 0.00%        | 0          | 0.00%           |
| Heat-Cold Exposure Total                 | 2           | 0.04%         | 1          | 0.03%           | 2          | 0.04%        | 2          | 0.07%           |
| Electrocution/Lightning Total            | 1           | 0.02%         | 0          | 0.00%           | 0          | 0.00%        | 0          | 0.00%           |
| Eye Injuries Total                       | 1           | 0.02%         | 0          | 0.00%           | 4          | 0.09%        | 1          | 0.03%           |
| <b>Total</b>                             | <b>1371</b> | <b>29.96%</b> | <b>700</b> | <b>23.51%</b>   | <b>317</b> | <b>6.93%</b> | <b>187</b> | <b>6.28%</b>    |

| December 2010<br>OTHER CALLS/TRANSPORTS |           |              |            |                 |            |              |            |                 |
|---|-----------|--------------|------------|-----------------|------------|--------------|------------|-----------------|
|   | Code 3    |              |            |                 | Code 2     |              |            |                 |
|   | Calls     | % of Calls   | Transports | % of Transports | Calls      | % of Calls   | Transports | % of Transports |
| Law Enforcement Request                 | 37        | 0.81%        | 26         | 0.87%           | 402        | 8.78%        | 240        | 8.06%           |
| Medical-Call Box Alarm                  | 8         | 0.17%        | 1          | 0.03%           | 1          | 0.02%        | 1          | 0.03%           |
| Standby-Public Safety                   | 4         | 0.09%        | 0          | 0.00%           | 36         | 0.79%        | 6          | 0.20%           |
| Public-Unit Assist                      | 0         | 0.00%        | 0          | 0.00%           | 2          | 0.04%        | 2          | 0.07%           |
| Standby-Dedicated                       | 0         | 0.00%        | 0          | 0.00%           | 4          | 0.09%        | 0          | 0.00%           |
| <b>Total</b>                            | <b>49</b> | <b>1.07%</b> | <b>27</b>  | <b>0.91%</b>    | <b>445</b> | <b>9.72%</b> | <b>249</b> | <b>8.36%</b>    |

**F. CALL DOWNGRADES (CODE 3 – EMERGENCY LIFE THREAT TO CODE 2– EMERGENCY NON-LIFE THREAT)**

November 2010 — 34 calls were downgraded from Code 3 to Code 2.

December 2010 — 37 calls were downgraded from Code 3 to Code 2.


**G. CODE 2 (EMERGENCY NON-LIFE THREAT) DISPATCH HOLDS / DELAYS**

In November 2010, dispatch was held on 31 Code 2 calls. In December 2010, dispatch was held on 45 Code 2 calls. Dispatch delays were a result of the Contractor's decision to hold a Code 2 call and assign it to a closer unit when it became available, or to reassign a Code 2 call to another unit when the initial unit was closest to a higher priority call.

**H. DETOX TRANSPORTS**

| Month (2009)      | Centura Penrose Main | Centura St. Francis Medical Center | Memorial Hospital - Main | Memorial Hospital - North | Aspen Pointe | 911 Calls  | Total       |
|-------------------|----------------------|------------------------------------|--------------------------|---------------------------|--------------|------------|-------------|
| November          | 26                   | 2                                  | 40                       | 7                         | 0            | 18         | 93          |
| December          | 29                   | 2                                  | 54                       | 8                         | 0            | 18         | 111         |
| November          | 30                   | 6                                  | 53                       | 6                         | 1            | 12         | 108         |
| December          | 17                   | 4                                  | 55                       | 2                         | 0            | 14         | 92          |
| <b>2009 Total</b> | <b>102</b>           | <b>14</b>                          | <b>202</b>               | <b>23</b>                 | <b>1</b>     | <b>62</b>  | <b>404</b>  |
| January           | 32                   | 6                                  | 78                       | 7                         | 2            | 20         | 145         |
| February          | 30                   | 6                                  | 62                       | 6                         | 0            | 7          | 111         |
| March             | 32                   | 4                                  | 79                       | 7                         | 0            | 12         | 134         |
| April             | 38                   | 7                                  | 72                       | 12                        | 0            | 25         | 154         |
| May               | 57                   | 9                                  | 97                       | 9                         | 0            | 37         | 209         |
| June              | 41                   | 15                                 | 84                       | 11                        | 1            | 29         | 181         |
| July              | 46                   | 12                                 | 93                       | 6                         | 1            | 73         | 231         |
| August            | 35                   | 13                                 | 82                       | 2                         | 0            | 72         | 204         |
| September         | 53                   | 4                                  | 74                       | 6                         | 0            | 56         | 193         |
| October           | 74                   | 13                                 | 93                       | 12                        | 1            | 73         | 266         |
| November          | 52                   | 6                                  | 93                       | 7                         | 0            | 73         | 231         |
| December          | 52                   | 5                                  | 109                      | 9                         | 1            | 62         | 238         |
| <b>2010 Total</b> | <b>542</b>           | <b>100</b>                         | <b>1016</b>              | <b>94</b>                 | <b>6</b>     | <b>539</b> | <b>2297</b> |

**IV. QUESTIONS AND/OR ADDITIONAL INFORMATION**


  
 Eileen Lynch Gonzalez
   
 Emergency Services Agency (ESA) Business Administrator



## **Community Relations Report Activities from December 2010 and January 2011**

### **Donated Medical Coverage**

- Best Christmas Ever

### **Donated Special Events/Community Education**

- Hosted Car Seat Safety Technician Class (four days)
- Community Car Seat Safety Check
- Tiger Cub tour of base and dispatch

**Upcoming event: Badging Ceremony, Feb 18<sup>th</sup>, 1600, City Council Chambers**

### **AMR actively participates in the following on an on-going basis**

- Safe Kids Coalition
- Drive Smart Steering Committee
- Leadership Pikes Peak
- Colorado Springs Executives Association
- Pikes Peak Fire Fighters Association
- Pikes Peak Chief's Forum



**Board of Directors**

Commander Jim Reid, Chair  
 Chief Carl Tatum, Vice-Chair  
 Dan Molner, LCSW, Secretary  
 T. Wayne Florek, Treasurer  
 Chief Tommy Smith  
 Councilmember Randy Purvis  
 (Alternate) Councilmember Tom Gallagher

Marilyn Gifford, M.D.  
 Jack Sharon, M.D.  
 Mayor Jeri Howells  
 Mark Watkins  
 John Scorsine  
 Commissioner Sallie Clark  
 (Alternate) Commissioner Dennis Hisey

**DATE:** February 2, 2011

**TO:** ESA Board Members

**FROM:** Grant Committee  
 Eileen Gonzalez, ESA Business Administrator  
 Bob Demetry, ESA Administrative Coordinator

**SUBJECT:** 2010 Fourth Quarter Grant Applications

The ESA Grant Committee met on January 26, 2011, to review four new grant applications received for the fourth quarter of 2010. The members present are pleased to make the following recommendations regarding funding the following projects in our EMS community:

| <u>Number</u> | <u>Agency</u>                                     | <u>Amount</u> | <u>Subject</u>                   | <u>Recommendation</u> |
|---------------|---|---------------|----------------------------------|-----------------------|
| 1004-01       | Falcon Fire Protection District                   | \$5,000.00    | Refurbished LifePak 12 monitor   | Approve               |
| 1004-02       | Palmer Lake Volunteer Fire Department             | \$4,900.00    | EMS Training Education           | Approve               |
| 1004-03       | Green Mountain Falls/Chipita Park Fire Department | \$4,841.35    | EMS Training Education/Equipment | Approve               |
| 1004-04       | Calhan Fire Protection District                   | \$1,881.38    | EMS Training Education           | Approve               |

In addition, the committee reviewed one request to amend the terms of a grant previously awarded. The grantee realized cost savings in the purchase of equipment subject to the grant, and wishes to retain the balance to make additional purchases. The Grant Committee reviewed and recommends approval of the amendment.

| <u>Number</u> | <u>Agency</u>                                     | <u>Subject</u>       | <u>Amendment</u>                             |
|---------------|---|----------------------|--|
| 1002-03       | Green Mountain Falls/Chipita Park Fire Department | AEDs and Trauma Kits | Retain balance for additional EMS equipment. |

As of December 31, 2010, the balance in the grant fund is \$63,067.99. If the Board approves the grants as recommended for a total of \$16,622.73, the resulting balance in the grant fund will be \$46,445.26. Upon approval by the Board, recipients will be notified of their grant award and invited for formal recognition at the April 6, 2011 board meeting.



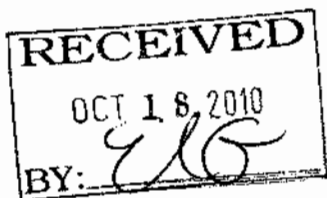
# FALCON FIRE PROTECTION DISTRICT

Administration Office  
7030 Old Meridian Road  
Falcon, Colorado 80831

Business Number: 719-495-4050 Business Fax: 719-495-3112



October 11, 2010



To Whom It May Concern:

On behalf of the Falcon Fire Protection District I would like to thank you and the Members of The Emergency Services Agency for the review and approval of our request of \$5000.00. These funds will be utilized to assist us in the purchasing of a Refurbished Physio Control Lifepak 12 Automatic External Defibrillator/Cardiac Monitor. The funding of this project has a significant impact on the service we provide to our community and is greatly appreciated.

Falcon Fire Protection District services 133 square miles of El Paso County. During the recent years our district has experienced growth and call volume, which has thinned our resources. On a yearly average, Falcon Fire Protection District responds to approximately 1800 calls 85% of those calls are medical related. Falcon Fire has increased the number of advance Life Support (ALS) personal and are searching for resources to help provide the medical equipment needed to provide expanded ALS services to the community. In the recent months Falcon Fire has added an additional engine company to our district 4 areas that service the Marksheffel corridor, the Claremont Ranch subdivision and a large part of highway 24. This engine is currently housed at the Cimarron Hills Fire station and is staffed 24/7. Currently this apparatus only carries a Lifepak 500 AED and is frequently staffed with ALS personnel. Falcon Fire Protection District would like to receive and to combine grants to achieve the goal of receiving one refurbished Lifepak 12 in order to effectively provide a higher level of care to our citizens.

At this time, Falcon Fire has submitted Grants to The Mountain View Round-Up Fund and was approved for \$5000. Falcon Fire's goal is to obtain \$12,000 to purchase a Refurbished Lifepak 12 by January 31, 2011. Falcon Fire Protection District has been supported through the funding of various projects over the years through the Emergency Services Agency. We are very thankful for our past endeavors with the ESA grant and look forward to future endeavors. Your support has directly impacted our community and given the Falcon Fire Protection District the ability to increase the service we provide. If you have any questions or concerns please feel free to contact me.

Thank you,

Amy Webb  
Fire Fighter II  
Falcon Fire Protection District

**SECTION B:** Please select one or more of the following four categories of grant project as applicable and provide the requested information.

**EMS TRAINING/EDUCATION**

Name of Organization providing training: \_\_\_\_\_

Focus of training: \_\_\_\_\_

Number of people to be trained: \_\_\_\_\_ Application Deadline: \_\_\_\_\_  
 \*(attach copy of application)

Date training will be completed: \_\_\_\_\_ Cost per person: \$ \_\_\_\_\_

Total estimated cost: \$ \_\_\_\_\_

Will per diem be paid to participants?  No  Yes Amount per day \$ \_\_\_\_\_

**EMS TRAINING MATERIALS**

Name of vendor(s) providing materials: \_\_\_\_\_

Subject: \_\_\_\_\_

Format (video, software, etc.): \_\_\_\_\_

If software, do you have compatible computer equipment?  Yes  No

\*Attach copy of specifications and price quotation(s)

**EMS EQUIPMENT**

Equipment (type, model #): Refurbished LifePak 12 monitor

Name of vendor(s): Foremost

Where will equipment be housed? ALS Apparatus

How many people will use equipment? 40 personal

Level of users' EMS training: EMT-Basic, EMT-Intermediate, and Paramedic

\*Attach copy of specifications and price quotation(s)

**EMS PUBLIC SAFETY EDUCATION**

Subject: \_\_\_\_\_

| Format:               | Price each |  |
|-----------------------|------------|--|
| Videos                | \$ _____   | *Attach copy of price quotations and context of material |
| Pamphlets             | \$ _____   |  |
| TV Spots              | \$ _____   |  |
| Radio Spots           | \$ _____   |  |
| Other media (specify) | \$ _____   |  |
| Total Cost            | \$ _____   |  |

Person responsible for project: \_\_\_\_\_

Training/background of person responsible for project: \_\_\_\_\_

Duration of project: \_\_\_\_\_

**SECTION C:** Please provide detailed information relating to your project as described below. The Grant Committee will review this information to evaluate your application as it relates to the grant program guidelines and as it compares to other applications.

### 1. PROBLEM STATEMENT

- a) Describe the situation. Include data and any other information to establish the existing conditions.
- b) State why this situation is undesirable.
- c) What are the causes?
- d) Identify changes needed to resolve the identified problem(s).

**Falcon Fire Protection District services 133 square miles of El Paso County. During the recent years our district has experienced growth and call volume, which has thinned our resources. On a yearly average, Falcon Fire Protection District responds to approximately 1800 calls 85% of those calls are medical related. Falcon Fire has increased the number of advance Life Support (ALS) personal and are searching for resources to help provide the medical equipment needed to provide expanded ALS services to the community. In the recent months Falcon Fire has added an additional engine company to our district 4 areas that service the Marksheffel corridor, the Claremont Ranch subdivision and a large part of highway 24. This engine is currently housed at the Cimarron Hills Fire station and is staffed 24/7. Currently this apparatus only carries a Lifepak 500 AED and is frequently staffed with ALS personnel. Falcon Fire Protection District would like to receive and to combine grants to achieve the goal of receiving one refurbished Lifepak 12 in order to effectively provide a higher level of care to our citizens.**

### 2. PROPOSED ACTIVITIES

- a) Describe the final goal of the project. What will the situation look like if the project is successful?
- b) Describe the specific steps that the project team will take to complete the project, and when you project those steps will be completed?

**Falcon Fire Protection District's goal is to receive a grant/or grants to be able to purchase one Refurbished Lifepak 12. If successful, the Lifepak will make apparatus inventory more appropriate for ALS personnel. In order to achieve this goal, Falcon Fire is applying for several grants to achieve the \$12,000.00 goal for one Refurbished Lifepak 12 by January 31, 2011.**

**SECTION C (continued):****3. EQUIPMENT/MATERIALS TO BE PURCHASED**

- a) What equipment and/or materials, if any, will be purchased to meet the needs of this project?

**Lifepak 12 monitor/defibrillator, CPR, pacc to 360J, SPO2/CO, 12L GL NIBP, CO2**

**Ship Kit**

**Electrode Assy - Adult**

**Test Load**

**Li-ion Battery**

**Carry Bag with strap, top pouch, and rear pouch**

**Large Adult cuff and child cuff**

**Patient Cable - 4 feet**

**Pediatric SPO2 sensor**

**NIBP hose**

**4. EVALUATION AND MONITORING**

- a) Describe how you will monitor project activity and progress during the execution of the project.
- b) Describe how you will determine whether the project has been successful. Administrative, performance or impact measures can be used.

**Monitoring the use of the Lifepak 12 can be achieved by training members on the department to use it and certifying members as set forth by the State of Colorado, American Heart Association and our Physician Advisor. We will put equipment into service, run daily service testing of the unit, which will also insure the unit is fully operational for that day. A Lifepak 12 will be located in our district 4 which will help maximize effectiveness of our medical personal during emergency medical incidents. The use of the Lifepak can also determine the best receiving facility for the patient. Falcon Fire Protection District is geographically located in an unincorporated county area. The Lifepak 12 would greatly increase survivability to those residing in the area that needs every second to count. Falcon will train biannually for re-certification and do ongoing maintenance of the equipment.**

2010 Approved Budget (corrected)

| <b>Falcon Fire Protection District</b>         |               | <b>2008</b>      | <b>2009</b>      | <b>2010</b>      |
|--|---------------|------------------|------------------|------------------|
| <b>BEGINNING BALANCE</b>                       |               | <b>747,075</b>   | <b>1,074,885</b> | <b>2,285,084</b> |
| <b>3-Month O&amp;M Reserve</b>                 |               | <b>320,577</b>   | <b>309,984</b>   | <b>453,164</b>   |
| <b>Operating Revenue</b>                       |               | <b>0</b>         | <b>0</b>         | <b>0</b>         |
| Fees   |               | 86,676           | 107,076          | 41,632           |
| Donations                                      |               | 1,255            | 782              | 915              |
| Reimbursements                                 |               | 51,737           | 82,664           | 61,678           |
| Grants   |               | 125,192          | 137,668          | 137,500          |
| Rural Water Fund                               |               | 20,868           | 0                | 1,000            |
| Developer FAEG Fund                            |               | 0                | 0                | 1,000            |
| <b>TOTAL OPERATING REVENUES</b>                |               | <b>285,728</b>   | <b>328,192</b>   | <b>243,345</b>   |
| <b>Non-Operating Revenue</b>                   |               |                  |                  |                  |
| Assessed Valuation                             |               | 269,659,000      | 291,537,580      | 309,659,550      |
| Mil Levy                                       |               | 5,712            | 5,712            | 5,712            |
| Property Taxes                                 |               | 1,535,176        | 1,882,325        | 1,770,483        |
| Special Ownership Taxes                        |               | 174,990          | 170,306          | 181,122          |
| Deposit Interest                               |               | 25,730           | 7,365            | 9,168            |
| Lease-Purchase Revenue                         |               | 0                | 1,620,000        | 0                |
| Dividend Income (Source is Lease Purchase)     |               |                  | 9,451            | 7,235            |
| Capital Sale                                   |               |                  |                  |                  |
| <b>TOTAL NON-OPERATING REVENUES</b>            |               | <b>1,735,896</b> | <b>3,469,208</b> | <b>1,969,008</b> |
| <b>TOTAL AVAILABLE RESOURCES</b>               |               | <b>2,768,050</b> | <b>4,872,283</b> | <b>4,496,437</b> |
| <b>ESTIMATED EXPENDITURES</b>                  |               |                  |                  |                  |
| <b>Administrative</b>                          |               |                  |                  |                  |
| Audit & Consulting                             | Yearly        | 6,800            | 13,850           | 34,300           |
| Awards & Incentives                            | Discretionary | 7,830            | 9,739            | 8,600            |
| Bank Service Charges (Source: Lease Purchase)  | Ops & Maint   | 56               | 109              | 71               |
| Bookkeeping                                    | Ops & Maint   | 8,747            | 9,954            | 9,979            |
| County Treasurers Fees                         | Ops & Maint   | 23,028           | 24,935           | 28,567           |
| Data Automation Support                        | Discretionary | 1,980            | 5,311            | 7,544            |
| Election                                       | Ops & Maint   | 7,400            | 0                | 7,400            |
| Legal Fees & Notices                           | Ops & Maint   | 67,015           | 93,259           | 64,444           |
| Office Supplies                                | Ops & Maint   | 4,811            | 6,419            | 6,950            |
| Tax Abatement Refunds                          | Ops & Maint   | 629              | 2,331            | 1,175            |
| <b>Total Administrative</b>                    |               | <b>147,996</b>   | <b>165,697</b>   | <b>167,172</b>   |
| <b>Operations</b>                              |               |                  |                  |                  |
| Capital Purchase Planning                      | Discretionary | 5,995            |                  | 20,000           |
| 800 MHz Radio Network Support                  | Ops & Maint   | 12,470           | 12,201           | 11,800           |
| County Paging Network Support                  | Ops & Maint   | 0                | 2,814            | 2,800            |
| Utilities                                      | Ops & Maint   | 26,121           | 20,998           | 31,838           |
| Fire Suppression Expendables                   | Ops & Maint   | 591              | 719              | 1,069            |
| Housekeeping                                   | Ops & Maint   | 3,240            | 5,177            | 6,116            |
| Insurance                                      | Ops & Maint   | 22,979           | 27,479           | 29,290           |
| Medical Supplies                               | Ops & Maint   | 1,999            | 3,217            | 3,329            |
| Telecommunications                             | Ops & Maint   | 5,142            | 6,727            | 10,299           |
| Vehicle Fuel                                   | Ops & Maint   | 23,504           | 14,101           | 18,038           |
| Salary   | Ops & Maint   | 696,669          | 840,563          | 1,103,424        |
| Benefits                                       | Ops & Maint   | 193,673          | 214,264          | 269,665          |
| Health and Wellness                            | Ops & Maint   |                  |                  | 8,300            |
| Volunteer Pension                              | Ops & Maint   | 20,000           | 28,877           | 29,700           |
| Volunteer Stipend                              | Ops & Maint   | 9,725            | 9,629            | 10,975           |
| Director Stipend                               | Ops & Maint   | 8,297            | 8,467            | 9,700            |
| Workers Compensation Insurance                 | Ops & Maint   | 28,099           | 25,308           | 32,469           |
| <b>Total Operations</b>                        |               | <b>1,058,644</b> | <b>1,223,021</b> | <b>1,616,341</b> |
| <b>Maintenance</b>                             |               |                  |                  |                  |
| Building & Grounds Maint.                      | Ops & Maint   | 9,241            | 10,369           | 9,234            |
| EMS Equipment Maint                            | Ops & Maint   | 0                | 685              | 1,295            |
| Fire Equipment Maint (2002 includes EMS equip) | Ops & Maint   | 5,230            | 3,985            | 6,239            |
| Office Equipment Maint                         | Ops & Maint   | 1,600            | 2,471            | 1,669            |
| Pager Warranty & Maint.                        | Ops & Maint   | 3,207            | (812)            |                  |
| Radio & Pager Maint.                           | Ops & Maint   | 1,973            | 5,299            | 1,325            |
| Vehicle Equipment Maint                        | Ops & Maint   | 0                | 0                | 623              |
| Vehicle Maint.                                 | Ops & Maint   | 27,008           | 28,132           | 32,111           |
| <b>Total Maintenance</b>                       |               | <b>48,329</b>    | <b>49,959</b>    | <b>51,778</b>    |



QUOTATION: 8201088987 BA

Date: 8/20/2010

|                          |   |
|--------------------------|---|
| <b>To:</b><br>AARON WOOD | <b>Vendor:</b><br>Foremost Equipment<br>320 North Washington St.<br>Rochester, NY 14625<br><br>Phone: 585-586-4880<br>Fax: 585-586-4882 |
|--------------------------|---|

|                 |                     |                  |       |
|-----------------|---------------------|------------------|-------|
| Shipping Method | FOB                 | Foremost Contact | Terms |
| UPS Ground      | Rochester, New York | Basil Arena      | CIA   |

| Item | Qty | Description   | Unit Price  | Amount      |
|------|-----|---|-------------|-------------|
| 1.0  | 1   | Physio Control Lifepak 12 - Biphasic                                  | \$10,495.00 | \$10,495.00 |
| 1.1  | 1   | 12 Lead EKG, AED, Pacing Printer, SPO2, NIBP, EtCO2, Refurbished Unit |             |             |
| 1.2  | 1   | 12 Lead EKG Cable, Quik Combo Cable, Users Manual                     |             |             |
| 1.3  | 1   | SPO2 Finger Probe, NIBP Cuff/Hose, Carry Case                         |             |             |
| 1.4  | 1   | 1 Set of Adult Pads, 2 New Batteries Nicad/Fastpak                    |             |             |
| 1.5  | 1   | 1 Year Warranty - Biocertified - 5 Day Right of Refusal               |             |             |
| 2.0  | 1   | Shipping and Handling   | TBD         |             |

Warranty

Foremost Equipment will find a suitable replacement for the equipment purchased by customer if such equipment needs repair within the warranty period stated above from the date of delivery by Foremost Equipment. Foremost expressly disclaims any warranty expressed or implied, including the warranty of merchantability, and customer hereby agrees to hold Foremost harmless and to indemnify Foremost against any claims for breach of warranty, product liability or similar claims.

I accept terms and conditions of quotation and Warranty \_\_\_\_\_

Signed

Date

ReMed Equipment  
 PO Box 12871  
 Rochester, NY 14612

Quote: 082410CW2

Ship To:

Bill To:

|  |  |  |
|--|--|--|
| ReMed Equipment<br>PO Box 12871<br>Rochester, NY 14612 | Falcon Fire Protection Dist.<br>Amy Benore | Falcon Fire Protection Dist.<br>Amy Benore |
|--|--|--|

| Qty | Description   | Amount      | Total       |
|-----|---|-------------|-------------|
| 1   | Refurbished Physio Control LifePak 12 Biphasic<br>With 12 Lead EKG Cable, Pacing Cable, AED<br>Spo2 Finger Sensor, NIBP Hose and Cuff,<br>End Tidal CO2, 2 New Batteries and a<br>Carrying Case | \$10,575.00 | \$10,575.00 |

Terms COD or Credit Card

1 Year Warranty: Warranty covers normal equipment failure it does not cover misuse or abuse



2460 ASH STREET  
VISTA, CA 92081  
Phone: (760) 597-5500 / (800) 764-0636  
http://www.progressivemed.com

# QUOTE

QUOTE NUMBER: 0211446  
QUOTE DATE: 8/17/2010  
CUSTOMER SVC REP: HIM - Heather Miller

SALESPERSON: 0015 - Heather Miller  
CUSTOMER NO: 02-0013648

**SOLD TO:**  
FALCON FIRE PROT DIST  
7030 N MERIDIAN RD  
FALCON, CO 80831-8112

**SHIP TO:**  
FALCON FIRE PROT DIST  
7030 N MERIDIAN RD  
FALCON, CO 80831-8112

CONFIRM TO: AMY BENOIRE

| CUSTOMER P.O.  | SHIP VIA     | F.O.B.  | TERMS       |            |           |           |
|--|--------------|---------|-------------|------------|-----------|-----------|
| LIFEPAK 12   | FEDEX GROUND |         | NET 30 DAYS |            |           |           |
| ITEM NUMBER  | UNIT         | ORDERED | SHIPPED     | BACK ORDER | PRICE     | AMOUNT    |
| LP12BPASTN0 R  | EACH         | 1       | 0           | 0          | 12,500.00 | 12,500.00 |
| LIFEPAK 12, REFURBISHED  |              |         |             |            |           |           |
| OPTIONS INCLUDED ON UNIT: BIPHASIC PACING, AED, SPO2, 12-LEAD NIBP & CO2   |              |         |             |            |           |           |
| ACCESSORY KIT: (1) TRUNK CABLE, (1) LIMB LEAD CABLE, (1) V-LEAD CABLE, (1) QUICK COMBO CABLE, (1) QUICK COMBO ELECTRODES, (1) SPO2 PROBE & EXTENSION, (1) BP CUFF & HOSE, (1) CO2 SAMPLE LINE, (2) BATTERIES, (1) PAPER, (1) MANUAL, 12-MONTH WARRANTY P/L |              |         |             |            |           |           |
| 0535-0050  | EACH         | 1       | 0           | 0          | 0.00      | 0.00      |
| STANDARD LIFEPAK 12 CARRY CASE   |              |         |             |            |           |           |
| LP12ACADAPTER N  | EACH         | 1       | 0           | 0          | 735.00    | 735.00    |
| LIFEPAK 12 AC ADAPTER, NEW   |              |         |             |            |           |           |
| IF THE A/C ADAPTER IS BEING USED ON THE LIFEPAK 12, A SEPARATE (LARGER) CASE MUST BE PURCHASED. SEE BELOW.   |              |         |             |            |           |           |
| 0488-0165  | EACH         | 1       | 0           | 0          | 232.00    | 232.00    |
| LIFEPAK 12 CARRY CASE TO FIT AC ADAPTER  |              |         |             |            |           |           |
| LPB5SII R  | EACH         | 1       | 0           | 0          | 850.00    | 850.00    |
| BATTERY SUPPORT SYSTEM II (3-BAY) CHARGER, REFURBISHED   |              |         |             |            |           |           |
| ACCESSORY KIT: (1) POWER CORD, (1) MANUAL, 12-MONTH WARRANTY P/L   |              |         |             |            |           |           |

SHIPPING TO BE DETERMINED  
NO CHARGE SALES TAX TO OUT OF STATE CUSTOMERS

|                     |                  |
|---------------------|------------------|
| Net Quote:          | 14,317.00        |
| Less Discount:      | 0.00             |
| Freight:            | 0.00             |
| Sales Tax:          | 0.00             |
| <b>Quote Total:</b> | <b>14,317.00</b> |

# LIFEPAK 12 DEFIBRILLATOR/MONITOR

Overview | Documents | Accessories | Request Information | Customer Support



The LIFEPAK<sup>®</sup> 12 Defibrillator/Monitor is a multi-parameter device that combines semi-automated and manual defibrillation with capnography, external pacing, 12-lead electrocardiography and other monitoring functions. Its platform is upgradeable, allowing customers to add new parameters as their needs change and as new features are introduced.

- Available with ADAPTIV<sup>™</sup> biphasic technology
- Compact and portable
- Paddle preference -- your choice of standard paddles, pediatric paddles, and/or sterilizable internal and external paddles
- Compatible with QUICK-COMBO<sup>®</sup> pacing/defibrillation/ECG electrodes
- Easy, simple, and affordable upgrades
- Guidance for compliance with HIPAA Security Standards for a Covered Entity available

## Multiparameter Monitoring

- Masimo SET<sup>®</sup> pulse oximetry offers accurate and stable oxygen saturation monitoring
- Oscillometric noninvasive blood pressure (NIBP) monitoring, with artifact rejection and automatic measurement modes
- End-tidal CO<sub>2</sub> (EtCO<sub>2</sub>) monitor for both intubated and nonintubated patients, with patented Microstream<sup>®</sup>, capnography technology and FilterLine<sup>®</sup> accessories that operate smoothly even in high humidity
- GE Marquette 12SL<sup>™</sup> ECG analysis program provides industry-standard interpretation so you can make treatment decisions with confidence
- Vital signs trending allows for rapid evaluation of changes in patient condition
- Cardiac condition and risk are easily tracked. ST-segment deviation is measured every 30 seconds

- Two channels of invasive pressure monitoring with waveforms and numerics displayed, interfaces with a variety of transducers
- Bluetooth wireless communication for transmission of 12-lead ECG and patient data

### Complete Customization

- Select AED, manual defibrillation or both, depending on users skills and comfort level; add noninvasive pacing, pulse oximetry (SpO<sub>2</sub>), 12-lead ECG analysis or LCD display, capnography and noninvasive blood pressure (NIBP)
- Take your pick of 50mm or 160mm printers, accessories and power options



## El Paso County Emergency Services Agency EMS Grant Program Application

The purpose of the ESA Grant Program is to provide funding for approved Emergency Medical Services (EMS) needs to participating ESA Agreement Agencies within El Paso County. Other non-signatory Agencies providing emergency medical services within El Paso County may apply for grant funds; however, ESA Agreement Signatory Agencies will be given priority status. For more information, go to [www.esaboard.org](http://www.esaboard.org).

### SECTION A

AGENCY NAME: PALMER LAKE FIRE DEPARTMENT

AGENCY MAILING ADDRESS: PO Box 302, PALMER LAKE CO 80133

CONTACT PERSON: SHANA BALL

PHONE: 719-499-1066 FAX: 719-481-3400

EMAIL: \_\_\_\_\_ FEDERAL TAX ID NUMBER: 98-04227



#### TYPE OF ORGANIZATION:

- |   |   |
|---|---|
| <input type="checkbox"/> City Government            | <input type="checkbox"/> Private/Not for Profit |
| <input type="checkbox"/> County Government          | <input checked="" type="checkbox"/> Other       |
| <input type="checkbox"/> Special District/Authority |   |

#### REQUEST CATEGORY:

- |  |  |
|--|--|
| <input checked="" type="checkbox"/> EMS Training/Education | <input type="checkbox"/> EMS Equipment               |
| <input type="checkbox"/> EMS Training Materials            | <input type="checkbox"/> EMS Public Safety Education |

AREAS/AGENCIES AFFECTED: NORTH GROUP

PROJECTED DATE OF COMPLETION: 5/30/2011

I, the undersigned, do hereby attest that the information contained in this application is true and accurate to the best of my knowledge. I also attest that I am authorized by the above organization to act as a representative for the purposes of the grant process. I understand that any intentional falsification of the information contained herein will disqualify this application. Misuse of grant funds may be subject to legal action.

Shana Ball  
SIGNATURE

Shana Ball  
PRINT NAME

Fire Chief  
TITLE

11-4-10  
DATE

**SECTION B:** Please select one or more of the following four categories of grant project as applicable and provide the requested information.

**EMS TRAINING/EDUCATION**

Name of Organization providing training: Pikes Peak Community College

Focus of training: EMT Basic

Number of people to be trained: 7 Application Deadline: 12/13/2011 (extended)  
 \*(attach copy of application)

Date training will be completed: 5/30/2011 Cost per person: \$700.00

Total estimated cost: ~~\$45,000.00~~ \$4,900 Will per  
 diem be paid to participants?  No  Yes Amount per day \$ \_\_\_\_\_

**EMS TRAINING MATERIALS**

Name of vendor(s) providing materials: \_\_\_\_\_

Subject: \_\_\_\_\_

Format (video, software, etc.): \_\_\_\_\_

If software, do you have compatible computer equipment?  Yes  No

\*Attach copy of specifications and price quotation(s)

**EMS EQUIPMENT**

Equipment (type, model #): \_\_\_\_\_

Name of vendor(s): \_\_\_\_\_

Where will equipment be housed? \_\_\_\_\_

How many people will use equipment? \_\_\_\_\_

Level of users' EMS training: \_\_\_\_\_

\*Attach copy of specifications and price quotation(s)

**EMS PUBLIC SAFETY EDUCATION**

Subject: \_\_\_\_\_

| Format:               | Price each |
|-----------------------|------------|
| Videos                | \$ _____   |
| Pamphlets             | \$ _____   |
| TV Spots              | \$ _____   |
| Radio Spots           | \$ _____   |
| Other media (specify) | \$ _____   |
| Total Cost            | \$ _____   |

\*Attach copy of price quotations and context of material

Person responsible for project: \_\_\_\_\_

Training/background of person responsible for project: \_\_\_\_\_

Duration of project: \_\_\_\_\_

**SECTION C:** Please provide detailed information relating to your project as described below. The Grant Committee will review this information to evaluate your application as it relates to the grant program guidelines and as it compares to other applications.

### 1. PROBLEM STATEMENT

- a) Describe the situation. Include data and any other information to establish the existing conditions.
- b) State why this situation is undesirable.
- c) What are the causes?
- d) Identify changes needed to resolve the identified problem(s).

The Palmer Lake Volunteer Fire Department is a municipality with very limited funds. We are supported by the Town of Palmer Lake with a ½ cent sales tax that pays for our fire engine and associated costs, utilities, insurance and 1 paid contracted EMT firefighter.

Since this is a volunteer fire department, we are constantly recruiting new volunteers who often come to our department with little or no certification. It is then up to us to get these new members certified so that they can efficiently provide a profession service to the community in which they volunteer for. We are currently in need of more certified EMT basics as we have been running a higher call volume than has been in the past and we our providing a 24 hour 7 day a week service to our community. This load can and has caused certified volunteers to burn out and leave the department.

Getting these members certified in all areas of service that this department provides can be very costly to the members and the department. However it must done in order to provide a good service to our community as well as those communities in which we provide mutual aid. We currently have shifts set up for volunteers to sign up for response and they are doing very well, however we currently do not have enough EMT basics to cover shifts with out significant over lapse.

We currently have 7 qualified longstanding dedicated members of our department who are in need of obtaining their EMT basic certification. The actual cost of this course is approximately \$1,200.00 through most college programs. PPCC is offering a discounted rate for our department members since the department is willing and able to host the class for our members and others from other departments. We would then only need the assistance of funding to pay for our seven members to attend the class. This increase of certified members will lighten the responsibility of those members who are already certified. We will then be able to create coverage shifts that will be well balanced with enough EMT basics for each shift

### 2. PROPOSED ACTIVITIES

- a) Describe the final goal of the project. What will the situation look like if the project is successful?
- b) Describe the specific steps that the project team will take to complete the project, and when you project those steps will be completed?

Our final goal would be to have sufficient EMT basic coverage for all department shifts with rotation available for the volunteers of our department to be able to take vacations and other breaks needed and still have sufficient coverage. We will then have 7 EMT basics that can respond as needed as well as provide coverage when needed when our surrounding districts need help. We are often called to Tri Lakes Monument Fire Protection District to cover when they are either short staffed at a station or on various calls that leave us covering their district and ours.

Jeff Force with PPCC would supply an instructor to teach the EMT basic course out our station two evenings a week and some Saturdays until the course is completed. All surrounding agencies will be invited to send people to attend this course at our station with a discounted cost to those attending at our station. The course start date will be in January and we are projecting that the completion date will be no later than May 30<sup>th</sup> 2011.

### SECTION C (continued):

### 3. EQUIPMENT/MATERIALS TO BE PURCHASED

- a) What equipment and/or materials, if any, will be purchased to meet the needs of this project?

EMT basic books and possibly workbooks will be purchased by those who are attending the class.

### 4. EVALUATION AND MONITORING

- a) Describe how you will monitor project activity and progress during the execution of the project.
- b) Describe how you will determine whether the project has been successful. Administrative, performance or impact measures can be used.

Scores will be recorded on practice exams and evaluated by the instructor as well as reported to all agency supervisors with students involved in the class. An evaluation can be completed as to the number of people who attend and the number of those who successfully pass the course with obtaining their state and national certification.

CITY OF COLORADO SPRINGS  
*We Create Communities*



## El Paso County Emergency Services Agency EMS Grant Program Application

The purpose of the ESA Grant Program is to provide funding for approved Emergency Medical Services (EMS) needs to participating ESA Agreement Agencies within El Paso County. Other non-signatory Agencies providing emergency medical services within El Paso County may apply for grant funds; however, ESA Agreement Signatory Agencies will be given priority status. For more information, go to [www.esaboard.org](http://www.esaboard.org).

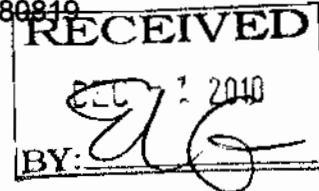
### SECTION A

AGENCY NAME: GREEN MOUNTAIN FALLS/CHIPITA PARK FIRE DEPARTMENT

AGENCY MAILING ADDRESS: PO Box 177 GREEN MOUNTAIN FALLS, COLORADO 80819

CONTACT PERSON: STEVE MURPHY

PHONE: 719-684-2293 FAX: 719-684-2023



EMAIL: SNOWMURPHS3@MSN.COM FEDERAL TAX ID NUMBER: 84-1219051

#### TYPE OF ORGANIZATION:

Special District/Authority

#### REQUEST CATEGORY:

EMS Training/Education   EMS Equipment

AREAS/AGENCIES AFFECTED: GREEN MOUNTAIN FALLS/CHIPITA PARK FIRE PROTECTION DISTRICT (APPROX. POP. 3800)

PROJECTED DATE OF COMPLETION: APRIL 2011

I, the undersigned, do hereby attest that the information contained in this application is true and accurate to the best of my knowledge. I also attest that I am authorized by the above organization to act as a representative for the purposes of the grant process. I understand that any intentional falsification of the information contained herein will disqualify this application. Misuse of grant funds may be subject to legal action.

SIGNATURE  
STEVE MURPHY  
PRINT NAME

CHIEF  
TITLE  
11/24/2010  
DATE



10380 Ute Pass Avenue · P.O. Box 177  
Green Mountain Falls, Colorado 80819

Emergency Dial 911  
Business (719) 684-2293

November 24, 2010

El Paso County Emergency Services Agency  
P.O. Box 1575, MC 1370  
Colorado Springs, Colorado 80901-1575

Re: ESA Grant 4<sup>th</sup> quarter

Enclosed is our request for the 2010 ESA 4<sup>th</sup> quarter grant. Thank you for the opportunity to be considered for this money. Our Department and our residents appreciate your assistance.

The total amount requested is \$4,841.35 for EMS equipment and training.

Sincerely,

Steve Murphy  
Chief

**SECTION B:** Please select one or more of the following four categories of grant project as applicable and provide the requested information.

**EMS TRAINING/EDUCATION**

Name of Organization providing training: Pikes Peak Community College

Focus of training: IV Certification

Number of people to be trained: 4      Application Deadline: None Required  
\*(attach copy of application)

Date training will be completed: March 2011      Cost per person: \$ 250.00

Total estimated cost: \$ 1000

Will per diem be paid to participants?     No       Yes      Amount per day \$ \_\_\_\_\_

**EMS TRAINING MATERIALS**

Name of vendor(s) providing materials: \_\_\_\_\_

Subject: \_\_\_\_\_

Format (video, software, etc.): \_\_\_\_\_

If software, do you have compatible computer equipment?       Yes       No

\*Attach copy of specifications and price quotation(s)

**EMS EQUIPMENT**

Equipment (type, model #): See attachment

Name of vendor(s): \_\_\_\_\_

Where will equipment be housed? GMF Station 1, various GMF rescue units

How many people will use equipment? 23

Level of users' EMS training: EMT-B, First Responder

\*Attach copy of specifications and price quotation(s)

**EMS PUBLIC SAFETY EDUCATION**

Subject: \_\_\_\_\_

| Format:               | Price each |  |
|-----------------------|------------|--|
| Videos                | \$ _____   | *Attach copy of price quotations and context of material |
| Pamphlets             | \$ _____   |  |
| TV Spots              | \$ _____   |  |
| Radio Spots           | \$ _____   |  |
| Other media (specify) | \$ _____   |  |
| Total Cost            | \$ _____   |  |

Person responsible for project: \_\_\_\_\_

Training/background of person responsible for project: \_\_\_\_\_

Duration of project: \_\_\_\_\_

**SECTION C:** Please provide detailed information relating to your project as described below. The Grant Committee will review this information to evaluate your application as it relates to the grant program guidelines and as it compares to other applications.

**1. PROBLEM STATEMENT**

- a) Describe the situation. Include data and any other information to establish the existing conditions.
- b) State why this situation is undesirable.
- c) What are the causes?
- d) Identify changes needed to resolve the identified problem(s).

The GMF/CP FD was able to purchase a quick response 4X4 medical unit for a minimal amount of money. The AED, suction unit, and jump kit refill will be used to equip this vehicle with needed BLS medical equipment. The IV arm and classes will be used to train/certify EMT's in IV therapy for BLS calls in our district. We currently have only four members that are IV certified. Airway management equipment is needed for our current medical units and to stock our new unit. The Department does not have the funds available to purchase this equipment.

**2. PROPOSED ACTIVITIES**

- a) Describe the final goal of the project. What will the situation look like if the project is successful?
- b) Describe the specific steps that the project team will take to complete the project, and when you project those steps will be completed?

All equipment would be purchased as soon as possible. The IV classes will start in March 2011, exact date TBD.

**SECTION C (continued):**

**3. EQUIPMENT/MATERIALS TO BE PURCHASED**

- a) What equipment and/or materials, if any, will be purchased to meet the needs of this project?

Airway management equipment

AED

BLS medical supplies

IV trainer

Combi tube trainer (To use on our new airway training simulaid)

**4. EVALUATION AND MONITORING**

- a) Describe how you will monitor project activity and progress during the execution of the project.
- b) Describe how you will determine whether the project has been successful. Administrative, performance or impact measures can be used.

Our EMT's will begin using the equipment immediately after receipt.

Our medical training director will begin training with the IV arm with our current EMT-B IV members and the arm will assist our members that will be taking the IV certification training in March.

Equipment list for ESA Grant  
Green Mountain Falls/Chipita Park Fire Department

|   |              |            |
|---|--------------|------------|
| 1 each IV Arm Trainer                     |              | \$407.00   |
| 1 each Adult combi tube                   |              | \$55.95    |
| 1 each small adult combi tube             |              | \$55.95    |
| 1 each Kendall combi tube trainer kit     |              | \$69.95    |
| 4 each Rusch NPA tube kits (nasal airway) | \$27.95 each | \$111.80   |
| 1 each LSU suction unit                   |              | \$899.00   |
| 2 each CAT Tourniquet                     | \$35.75      | \$71.50    |
| 3 each Light Pod rescue helmet w/light    | \$151.00     | \$453.00   |
| 1 each Cardiac Science AED w/peds pads    |              | \$1,592.00 |
| 1 each Dyna Med jump kit re-fill          |              | \$100.00   |
| 1 each O2 kit (bag only)                  |              | \$90.00    |
| Total                                     |              | \$3,841.35 |

## Misc Medical Supplies

### **PMI**

IV Trainer

13026 L.V. Arm/Hand Combo Training Unit \$407.00

### **Misc Supplies**

Combitube

16323 Adult 41F EACH \$55.95 QTY 1

16324 Small Adult 37F EACH \$55.95 QTY 1

16318 KENDALL COMBITUBE TRAINER KIT EACH \$69.95 QTY 1

NPA Set

14755 RUSCH NPA TUBES, EACH SIZE 9/PK \$27.95 QTY 4

Suction Unit

14570 LSU SUCTION UNIT EACH \$899.00 QTY 1

CAT Tourniquet

G1113 CAT TOURNIQUET BLACK EACH \$35.75 QTY 2

Rescue Helmet

50568 LIGHT POD HELMET, RED EACH \$131.00 QTY 3

50576 UK 4 AA FLASHLIGHT EACH \$19.95 QTY 3



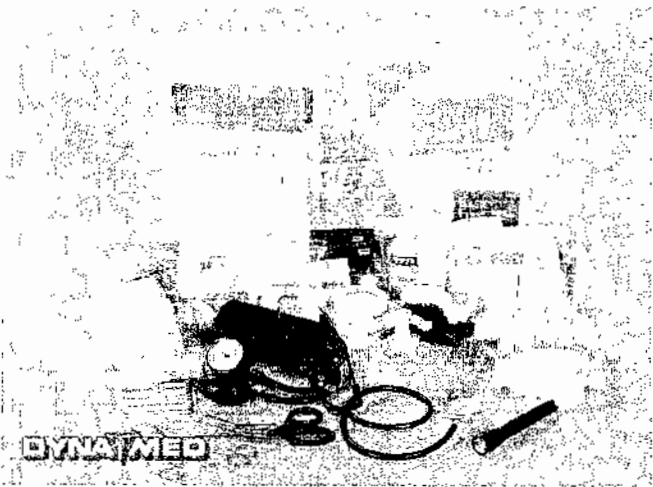
Pri  
FIR  
On  
Low  
Mat  
See

**ONE**



## SAVE with "Complete" & Level II BLS Kits

Pick the kit contents that best fits your needs, choose the type bag you prefer and SAVE money buying a kit! Choose between the BLS "Complete" kit with all the essentials you need, including one of three bag choices, or step up to the Level 2 kit which has seven additional items and two bag options. Refill kits are also available to replace your supplies - all at great savings over buying individual items separately.

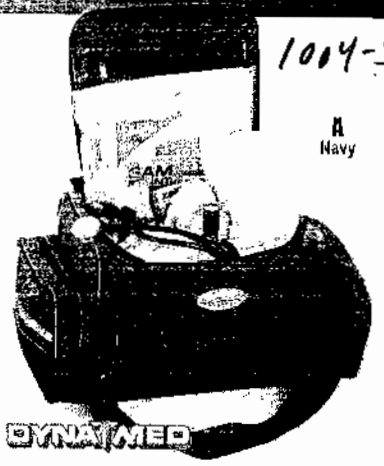


### BLS Complete Kit Contents

|                                |   |
|--------------------------------|---|
| Airway                         | 2. Triangular Bandages  |
| 1 Dyna Med CPR Mask            | Equipment & Supplies  |
| 1 Disposable Airway Kit        | 1 First Aid Booklet   |
| Burn                           | 10 Alcohol Prep Pads  |
| 1 Burn Sheet                   | 10 Antibiotic Ointment (.5 g)   |
| Bandages                       | 1 Bee Sting Kit   |
| 16 Adhesive bandages (1" x 3") | 2 Cold Packs  |
| 2 Abdominal Pads (5" x 8")     | 1 Eye Wash  |
| 1 Trauma Dressing (12" x 30")  | 10 PVP Iodine   |
| 20 Sterile Dressings (4" x 4") | 1 Space Blanket   |
| 4 Eye Pads                     | 10 Antimicrobial Wipes  |
| 1 Petroleum Gauze (3" x 9")    | 10 Pair Nitrile Gloves  |
| 2 Kerlix (4")                  | 1 SAM Splint (4 1/2" x 9")  |
| 10 Sterile Dressings (3" x 3") | 1 Disposable Foam Blanket   |
| 2 Blood Stoppers               | 1 BP/Stethoscope  |
| 2 Gauze Rolls (4" NS)          | 1 Instrument Pack (Shears, Kelly Forceps, bandage scissors, Splinter Forceps, penlight) |
| 2 Gauze Rolls (3" NS)          | 1 Mini-Mag flashlight   |
| 1 1/2" Waterproof Tape         | 1 SAM Splint (4 1/2" x 9")  |
| 1 1" Waterproof Tape           | 1 Disposable Foam Blanket   |
| 1 Elastic Bandage (4")         |   |
| 1 Elastic Bandage (3")         |   |

### BLS Refill Kit

Refill kit contains all your single-use essentials in the BLS Complete Kit. Refill kit does not contain BP/Stethoscope, Instrument Pack or Mini Mag.  
**BLS Refill Kit Only 1X-TK089 \$99.99**



**DYNAMED**

### Storage Options Make This Kit a

Versatility allows for better organization of supplies.

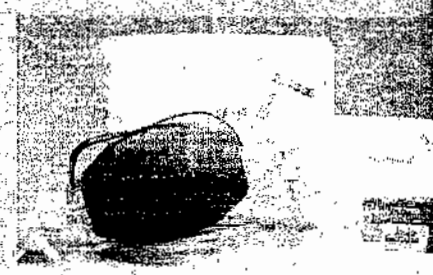
- 11 adjustable interior compartments
- 2 zippered outside compartments for bulkier items
- Mesh pouch on lid accommodates smaller items
- Waterproof bottom

1000 denier nylon. USA/Imported  
 9"H x 19 1/2"W x 12"D. 2,106 cu in.  
 Colors: Orange, Red or Navy with reflective Star of Life on bag top flap.

### (A) Maxi-Medic™ BLS Kit

| Description      | Item     | Bag & Co. Separately   |
|------------------|----------|------------------------|
| BLS Complete Kit | 1X-TK082 | \$199.1                |
| Maxi-Medic Bag   | 1X-BG087 | \$69.99 (See on p. 73) |

## BLS Level 2 Supply Kit in ALL Items in the BLS PLUS Seven Additional



The BLS Level 2 Kit includes everything in the BLS Level 1 Kit plus a Bag Valve Mask, a Cervical Collar, OB-Kit, Personal Protection Kit, Charcoal, Ammonia Inhalant, and Insta-G.

| Airway Supplies           | Equipment & Supplies |
|---------------------------|----------------------|
| 1 Bag Valve Mask**        | 1 Cervical Collar    |
| 1 OB-Kit                  | 1 Charcoal           |
| 1 Personal Protection Kit | 1 Ammonia Inhalant   |
|                           | 1 Insta-G            |

\*\*Not included in refill kit - only in original kit

### BLS LEVEL 2 Refill Kit Supplies ONLY

Contains all of your single-use essentials in the BLS Level 2 Kit (items listed on left) except the BP/Stethoscope Kit, Instrument Pack and Mini-Mag.

**BLS Level 2 Refill Kit Only 1X-TK090 \$159.99**

1004-3



**OXYGEN RESPONDER PACK**

The fold back lid has two zippered mesh pockets for oxygen mask or other supplies. Padded main compartment has hook and loop tank anchors to securely hold "D" or Jumbo "D" tanks (sold separately). Interior perimeter features rugged mesh pockets and elastic loop holders. Two full-length YKK zippered side pockets offer additional storage. Measures 27"L x 12"W x 10"H.

| ITEM # | COLOR  | QTY  | PRICE   |
|--------|--------|------|---------|
| 11208  | Green  | Each | \$89.95 |
| 11281  | Navy   | Each | \$89.95 |
| 11236  | Orange | Each | \$89.95 |



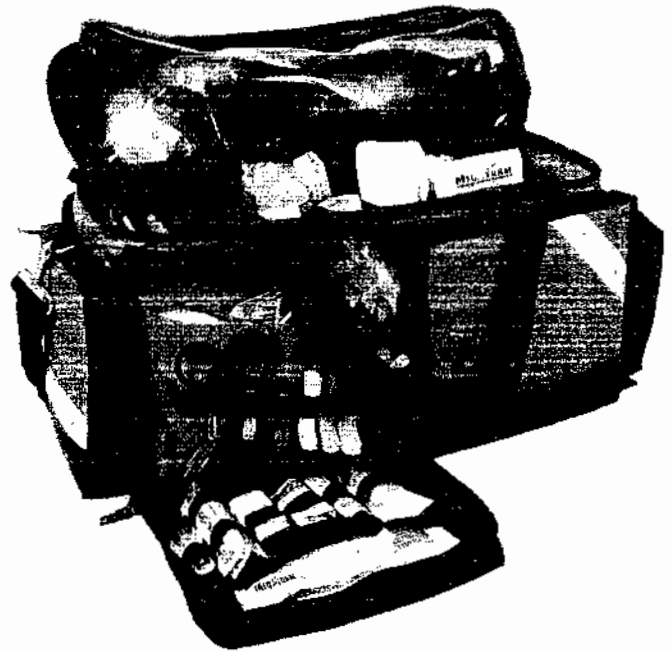
**BEST SELLER!**



**OXYGEN RESPONDER PLUS PACK**

The Oxygen Responder Plus Pack features a removable shelf and dividers. Two mesh pockets in the lid hold masks and cannulas. Includes five full-size outer pockets and two fold down front pockets, with a generous supply of elastic loops, large open trauma dressing pockets and an inner zippered compartment. Measures 27"L x 10"W x 14"H. Supplies not included.

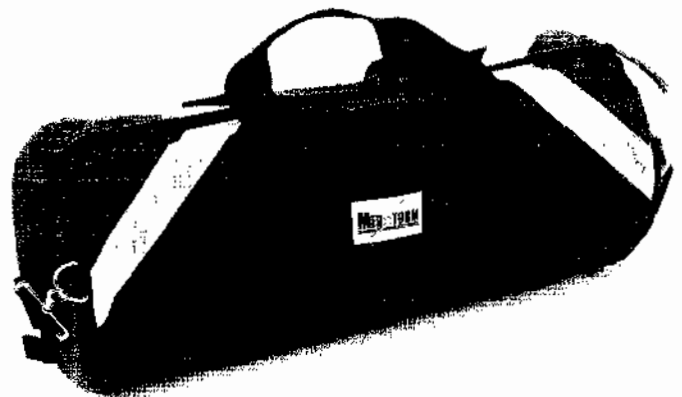
| ITEM # | COLOR      | QTY  | PRICE    |
|--------|------------|------|----------|
| 11211  | Orange     | Each | \$149.95 |
| 11209  | Royal Blue | Each | \$149.95 |
| 11215  | Red        | Each | \$149.95 |



**MEDIC O2 BAG**

Simple but effective design holds an oxygen cylinder, oral airways, pocket mask and oxygen masks. Zippered top pocket completely encloses regulator. Adjustable Velcro® straps allow the O2 Bag to be secured to the ambulance cot side rails for quick oxygen access. "D"/Jumbo "D" measures 21"L x 8.5"W x 8.5"H. "E" bag measures 32"L x 8.5"W x 8.5"H.

| ITEM # | COLOR               | QTY  | PRICE   |
|--------|---------------------|------|---------|
| 11273  | "D"/Jumbo "D" Green | Each | \$59.95 |



1004-3

# 2010 Purchase Agreement

Territory Mgr: Kelly Lucas - Territory Manager Date: November 9, 2010

### CUSTOMER BILLING INFORMATION

|   |  |
|---|--|
| Customer: <u>Green Mtn. Falls / Chipita Park Fire</u>   | Contact Name: <u>Michael Martinez</u>                            |
| Address 1: <u>10380 Ute Pass Ave.</u>   | Title: <u>Medical Captain</u>                                    |
| Address 2: <u>SUITE</u>   | Phone: <u>719-210-5088</u>                                       |
| City: <u>Green Mountain Falls</u>   | Fax: <u>FAX</u>  |
| State: <u>CO</u> Zip: <u>80819</u>  | E-mail: _____  |
| County: <u>COUNTY</u>   |  |
| Invoice to: <input checked="" type="radio"/> Corporate Billing Address <input type="radio"/> Individual Locations (provide details) | Tax exemption # <u>if Tax Exempt - please attach signed form</u> |
| Payment Term: <u>Net 30 Days Payment</u> Specify Payment Terms here, if other   | P.O. # <u>if PO is needed- please attach</u>                     |
| Payment: <u>Check</u>   |  |
| Class ID: <u>End User</u> Segment: _____  | Lead: _____  |
| Pricing Code (if PAD/Contract): _____ Affiliation: _____  |  |

### CUSTOMER SHIPPING INFORMATION

|   |   |
|---|---|
| Customer: <u>Green Mtn. Falls / Chipita Park Fire</u> | Contact Name: <u>Michael Martinez</u>   |
| Address 1: <u>10380 Ute Pass Ave.</u>                 | Title: <u>Medical Captain</u>           |
| Address 2: <u>SUITE</u>                               | Phone: <u>719-210-5088</u>              |
| City: <u>Green Mountain Falls</u>                     | Fax: <u>FAX</u>                         |
| State: <u>CO</u> Zip: <u>80819</u>                    | E-mail: <u>mjm_martinez@comcast.net</u> |
| County: <u>COUNTY</u>                                 | Shipping Method: <u>FedEx - Ground</u>  |
| F.O.B.: <u>Factory</u>                                | Freight Collected Account: _____        |

### EQUIPMENT, ACCESSORIES, and PROGRAM MANAGEMENT

| AED Devices:   | Item       | List        | Qty | Price/each  | Subtotal    |
|--|------------|-------------|-----|-------------|-------------|
| Powerheart AED G3 Semi-automatic Package: AED, Carry Case, Ready Kit, Spare Pads | 9300E-501P | \$ 1,995.00 | 1   | \$ 1,295.00 | \$ 1,295.00 |
| AED Devices  |            | \$ -        |     | \$ -        | \$ -        |

| AED Accessories / Upgrade Options:                  | Item     | List     | Qty | Price/each | Subtotal  |
|---|----------|----------|-----|------------|-----------|
| Pediatric Defibrillation Peds - two year shelf life | 9730-002 | \$ 99.00 | 3   | \$ 99.00   | \$ 297.00 |
| AED Accessories                                     |          | \$ -     |     | \$ -       | \$ -      |
| AED Accessories                                     |          | \$ -     |     | \$ -       | \$ -      |
| AED Accessories                                     |          | \$ -     |     | \$ -       | \$ -      |
| AED Accessories                                     |          | \$ -     |     | \$ -       | \$ -      |
| AED Accessories                                     |          | \$ -     |     | \$ -       | \$ -      |
| Upgrade Options                                     |          | \$ -     |     | \$ -       | \$ -      |

Program Management:

|  |                            |  |
|--|----------------------------|--|
| Champion Name: <u>Michael Martinez</u> | Phone: <u>719-210-5088</u> | Email: <u>mjm_martinez@comcast.net</u> |
|--|----------------------------|--|

| Program Management:                       | Item     | List | Qty | Price/each | Subtotal |
|---|----------|------|-----|------------|----------|
| Program Management (full packages)        |          | \$ - |     | \$ -       | \$ -     |
| Prescription for AED                      | 9928-001 | \$ - | 1   | \$ -       | \$ -     |
| Program Management (components/add-ons)   |          | \$ - |     | \$ -       | \$ -     |
| Program Management (components/add-ons)   |          | \$ - |     | \$ -       | \$ -     |
| Service Options                           |          | \$ - |     | \$ -       | \$ -     |
| Service Options                           |          | \$ - |     | \$ -       | \$ -     |
| Program Management Options (manager only) |          | \$ - |     | \$ -       | \$ -     |

| Miscellaneous Items (enter as needed): | Item    | List | Qty | Price/each | Subtotal |
|--|---------|------|-----|------------|----------|
| Miscellaneous Items                    | XXXX-XX |      |     | \$ -       | \$ -     |
| Miscellaneous Items                    | XXXX-XX |      |     | \$ -       | \$ -     |

Order Subtotal (excluding tax and shipping): **\$ 1,592.00**  
 Sales Tax: ltd  
 Shipping: ltd  
**Grand Total: \$ 1,592.00**

Comments/Notes Section:

Please send purchase orders and correspondence to: **Cardiac Science Corporation**  
 3303 Monte Villa Parkway  
 Bothell, WA 98021  
 Tel: +1.800.991.5465

Fax To: **720-367-5136**

Please send payment to: **Cardiac Science Corporation**  
 Dept. 0587  
 PO Box 120587  
 Dallas, TX 75312-0587

Form Updated 6/01/2010

### PROJECT FOLLOW-UP REPORT

Please complete, attach any supporting documentation, and return to the ESA Contract Administrator within 60 days of project completion date. Return to:

El Paso County Emergency Services Agency  
P.O. Box 1575, MC 1370  
Colorado Springs, CO 80901-1575  
Fax: 719-520-7655  
Email: [egonzalez@springsgov.com](mailto:egonzalez@springsgov.com)

AGENCY NAME: GREEN MOUNTAIN FALLS/CHIPITA PARK VOLUNTEER FIRE DEPARTMENT

DATE PROJECT COMPLETED: OCTOBER 20, 2010

TOTAL AMOUNT SPENT \$ 4,718.49

\*attach copy of invoice(s)

RESULTS OF PROJECT: THE DESIRED PURCHASES WERE MADE WITH THE GRANT FUNDS WITH AN EXCESS OF \$271.15 DUE TO A VENDOR APPLYING A DISCOUNT TO ONE OF OUR INVOICES. FD EMT'S HAVE BEEN ABLE TO PRACTICE AIRWAY SKILLS WITH THE AIRWAY TRAINER THAT WOULD NOT HAVE BEEN POSSIBLE BEFORE THE PURCHASE. RESCUE RANDY HAS BEEN USED FOR FF DOWN/SAR TRAINING AND OFFERS REALISTIC TRAINING WITHOUT THE SAFETY CONCERNS OF USING REAL PEOPLE. THE MEDICAL EQUIPMENT HAS BEEN PUT IN SERVICE AND HAS BEEN USED ON A WEEKLY BASIS. EACH RESCUE TRUCK NOW HAS A PULSE OXIMETER ON BOARD AND ALL OF OUR EMT'S HAVE A QUALITY STETHOSCOPE FOR USE WITHOUT THE CONCERN OF SHARING.

RECEIVED  
OCT 21 2010  
BY: *[Signature]*

*[Signature]*  
SIGNATURE

CHIEF  
TITLE

10/20/2010  
DATE

GREEN MOUNTAIN FALLS/CHIPITA PARK  
VOLUNTEER FIRE DEPARTMENT  
10380 UTE PASS AVENUE  
GREEN MOUNTAIN FALLS, COLORADO 80819  
719-684-2293  
EST. 1956



ESA Grant Board  
Jim Reid/Eileen Gonzales  
P.O. Box 1575, MC 1370  
Colorado Springs, Colorado 80901-1575

October 20, 2010

Re: ESA Grant #1002-03

Dear Chairman Reid,

Enclosed you will find the Follow Up Report with supporting documents for grant #1002-03. We were extended a discount from one of our vendors and had \$271.15 left over. We would like to retain the extra funds to purchase additional items for our new airway trainer which include: 3-combi-tube training kits (\$70.00 each) and 3- NPA airway kits (\$28.00) for a total of \$294.00.

Thank you for offering this grant program and for considering our Department.

Sincerely,

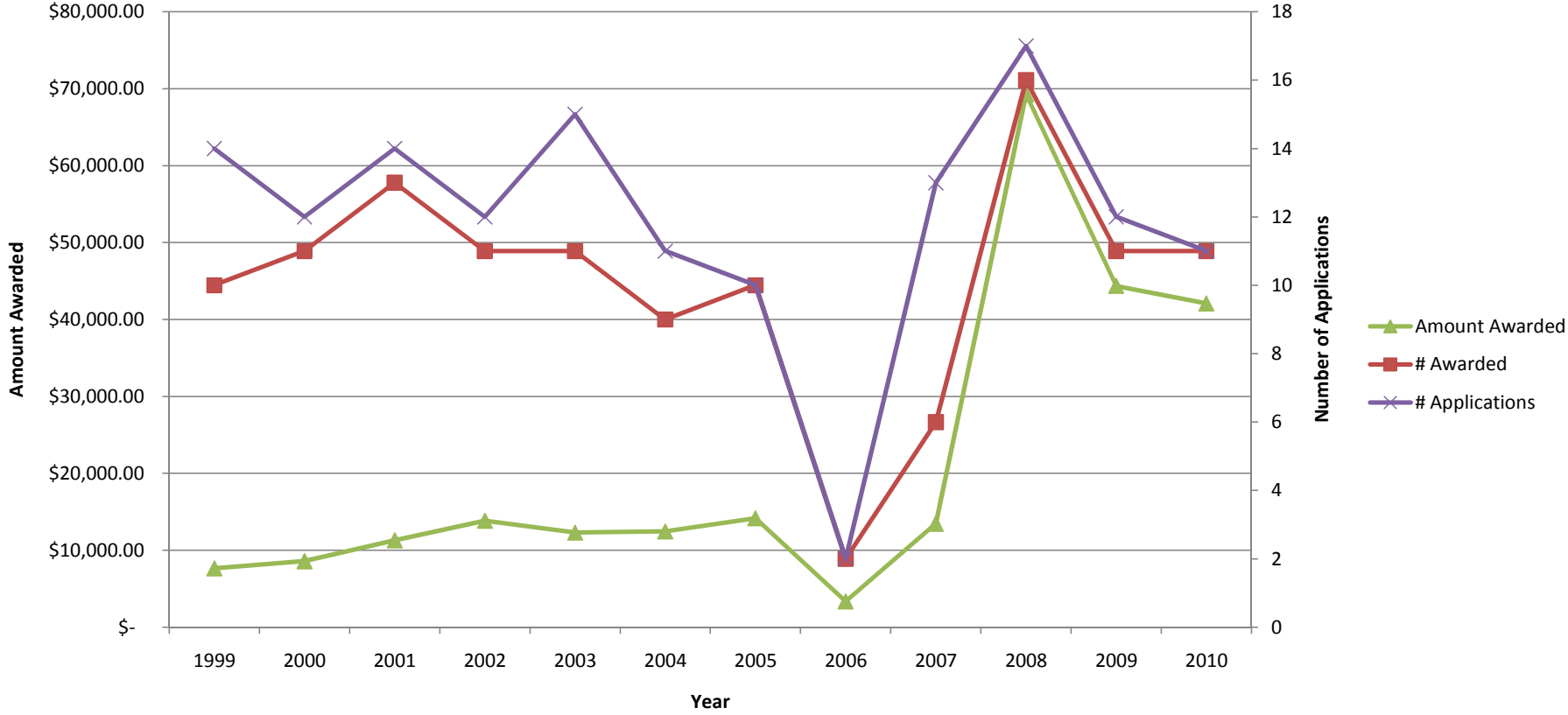
A handwritten signature in black ink, appearing to read 'Steve Murphy', with a long horizontal flourish extending to the right.

Steve Murphy  
Chief

ESA Grant Program History 1999-2010  
Applications and Awards by Agency

| Agency  | Number of Applications | Number of Awards | Total Award Amount  | % of Total Awards |
|---|------------------------|------------------|---------------------|-------------------|
| Colorado Springs Fire Department                      | 11                     | 7                | \$31,088.00         | 12.3%             |
| Calhan Fire Protection District                       | 11                     | 11               | \$22,935.31         | 9.1%              |
| Falcon Fire Protection District                       | 9                      | 9                | \$18,225.00         | 7.2%              |
| Hanover Fire Protection District                      | 9                      | 8                | \$17,086.39         | 6.8%              |
| El Paso County Search & Rescue                        | 2                      | 2                | \$15,027.00         | 5.9%              |
| Woodmen Valley Fire Protection District               | 11                     | 11               | \$12,840.00         | 5.1%              |
| El Paso County Sheriff's Office                       | 5                      | 4                | \$12,825.52         | 5.1%              |
| Cimarron Hills Fire Department                        | 3                      | 3                | \$11,401.96         | 4.5%              |
| Stratmoor Hills Volunteer Fire Department             | 11                     | 11               | \$10,572.00         | 4.2%              |
| City of Fountain Fire Department                      | 4                      | 4                | \$9,453.82          | 3.7%              |
| Pikes Peak Firefighters Association - Fire Rehab      | 3                      | 2                | \$9,218.00          | 3.6%              |
| Ellicott Fire Protection District                     | 2                      | 2                | \$8,751.80          | 3.5%              |
| SW Hwy 115 Fire Protection District                   | 3                      | 3                | \$8,382.69          | 3.3%              |
| Green Mountain Falls/Chipita Park Fire Department     | 3                      | 3                | \$7,649.89          | 3.0%              |
| Peyton Fire Protection District                       | 4                      | 4                | \$6,706.80          | 2.7%              |
| Palmer Lake Volunteer Fire Department                 | 4                      | 4                | \$6,060.58          | 2.4%              |
| El Paso-Teller 911 Authority                          | 5                      | 4                | \$5,920.00          | 2.3%              |
| Black Forest Fire Rescue                              | 7                      | 6                | \$5,850.00          | 2.3%              |
| Manitou Springs Volunteer Fire Department             | 4                      | 4                | \$4,700.00          | 1.9%              |
| Edison Volunteer Fire Department                      | 3                      | 3                | \$4,694.00          | 1.9%              |
| Colorado Centre Metropolitan District                 | 1                      | 1                | \$4,320.49          | 1.7%              |
| Drive Smart Colorado                                  | 1                      | 1                | \$4,040.00          | 1.6%              |
| Summer Heat, Inc.                                     | 3                      | 2                | \$4,000.00          | 1.6%              |
| Tri-County Volunteer Fire Department                  | 2                      | 2                | \$2,036.74          | 0.8%              |
| Security Fire Department                              | 1                      | 1                | \$1,763.70          | 0.7%              |
| Tri-Lakes Fire Protection District                    | 3                      | 2                | \$1,579.00          | 0.6%              |
| Cascade Volunteer Fire Department                     | 2                      | 2                | \$1,390.00          | 0.5%              |
| AHA for Colorado Springs CPR Coalition                | 1                      | 1                | \$1,000.00          | 0.4%              |
| Broadmoor Fire Rescue                                 | 1                      | 1                | \$1,000.00          | 0.4%              |
| Southern Colorado Critical Incident Stress Management | 1                      | 1                | \$1,000.00          | 0.4%              |
| Woodmoor/Monument Fire Protection District            | 1                      | 1                | \$1,000.00          | 0.4%              |
| Pikes Peak Area Trauma Advisory Council               | 1                      | 1                | \$500.00            | 0.2%              |
| 571 Medical Company                                   | 2                      | 0                | \$0.00              | 0.0%              |
| Cycle Safety Circus for Kids                          | 1                      | 0                | \$0.00              | 0.0%              |
| El Paso County Security Department                    | 1                      | 0                | \$0.00              | 0.0%              |
| Florissant Fire Protection District                   | 1                      | 0                | \$0.00              | 0.0%              |
| IAFF Local #5   | 1                      | 0                | \$0.00              | 0.0%              |
| Memorial Hospital Emergency Medical Services          | 1                      | 0                | \$0.00              | 0.0%              |
| Penrose St. Francis Health Services                   | 2                      | 0                | \$0.00              | 0.0%              |
| Pikes Peak Council/Boy Scouts of America              | 1                      | 0                | \$0.00              | 0.0%              |
| Rocky Mountain Women's Firefighters Association       | 1                      | 0                | \$0.00              | 0.0%              |
| <b>Grand Total</b>                                    | <b>143</b>             | <b>121</b>       | <b>\$253,018.69</b> | <b>100%</b>       |

### ESA Grant Program History, 1999 - 2010 YTD





## Ground Emergency Ambulance Contract Process: 2009 Contract Milestones & Possible 2014 Schedule

### January 1, 2009 – Contract Begins

#### 2008:

- December 2008 – BOCC and City Council approval
- November 5, 2008 – Final contract award
- May 9, 2008 – Proposals due (~60 days)
- March 6, 2008 – Ambulance RFP issued

#### 2007:

- December 2007 – Consultant-led stakeholder meetings
- August 23, 2007 – Consultant contract signed
- June 18, 2007 – Consultant proposals due
- June 5, 2007 – Consultant RFP issued
- June 2007 – Staff holds stakeholder meetings

### January 1, 2014 – Contract Begins

#### 2013:

- November 2013 – BOCC and City Council approval
- October 2013 – Final contract award
- July 2013 – Preliminary contract award, contract negotiations begin (~90 days)
- April 2013 – Proposals due (~60 days)
- February 2013 – Ambulance RFP issued

#### 2012:

- September 2012 – Award consultant contract; begin planning meetings to draft ambulance RFP
- July 2012 – Consultant proposals due
- May 2012 – Issue consultant RFP
- January 2012 – Stakeholder meetings begin



**Board of Directors**

Commander Jim Reid, Chair  
Chief Carl Tatum, Vice-Chair  
Dan Molner, LCSW, Secretary  
T. Wayne Florek, Treasurer  
Chief Tommy Smith  
Councilmember Randy Purvis  
(Alternate) Councilmember Tom Gallagher

Marilyn Gifford, M.D.  
Jack Sharon, M.D.  
Mayor Jeri Howells  
Mark Watkins  
John Scorsine  
Commissioner Sallie Clark  
(Alternate) Commissioner Dennis Hisey

**MEMORANDUM**

TO: ESA Board of Directors  
FROM: Eileen Gonzalez, Business Administrator  
DATE: February 2, 2011  
RE: Open Meetings Posting Locations

Pursuant to the Colorado Open Meetings Law (C.R.S. §§ 24-6-402), a local public body such as the ESA must designate the public places for posting its meeting notices annually at its first regular meeting of each calendar year.

Section III.10 of the ESA's bylaws adopted January 21, 2010, entitled "Open Meetings Requirements," states the following:

"Notice of all regular and special meetings shall include an agenda and shall be posted at the **City Clerk's Office, located at 30 S. Nevada, Colorado Springs, Colorado** and the **El Paso County Administration Building, located at 27 E. Vermijo, Colorado Springs, Colorado**, no less than 24 hours prior to the meeting. Meeting notices may also be posted on the Agency's website, [www.esaboard.org](http://www.esaboard.org)."

This notice serves as the official designation of open meetings posting locations for the El Paso County Emergency Services Agency for 2011.