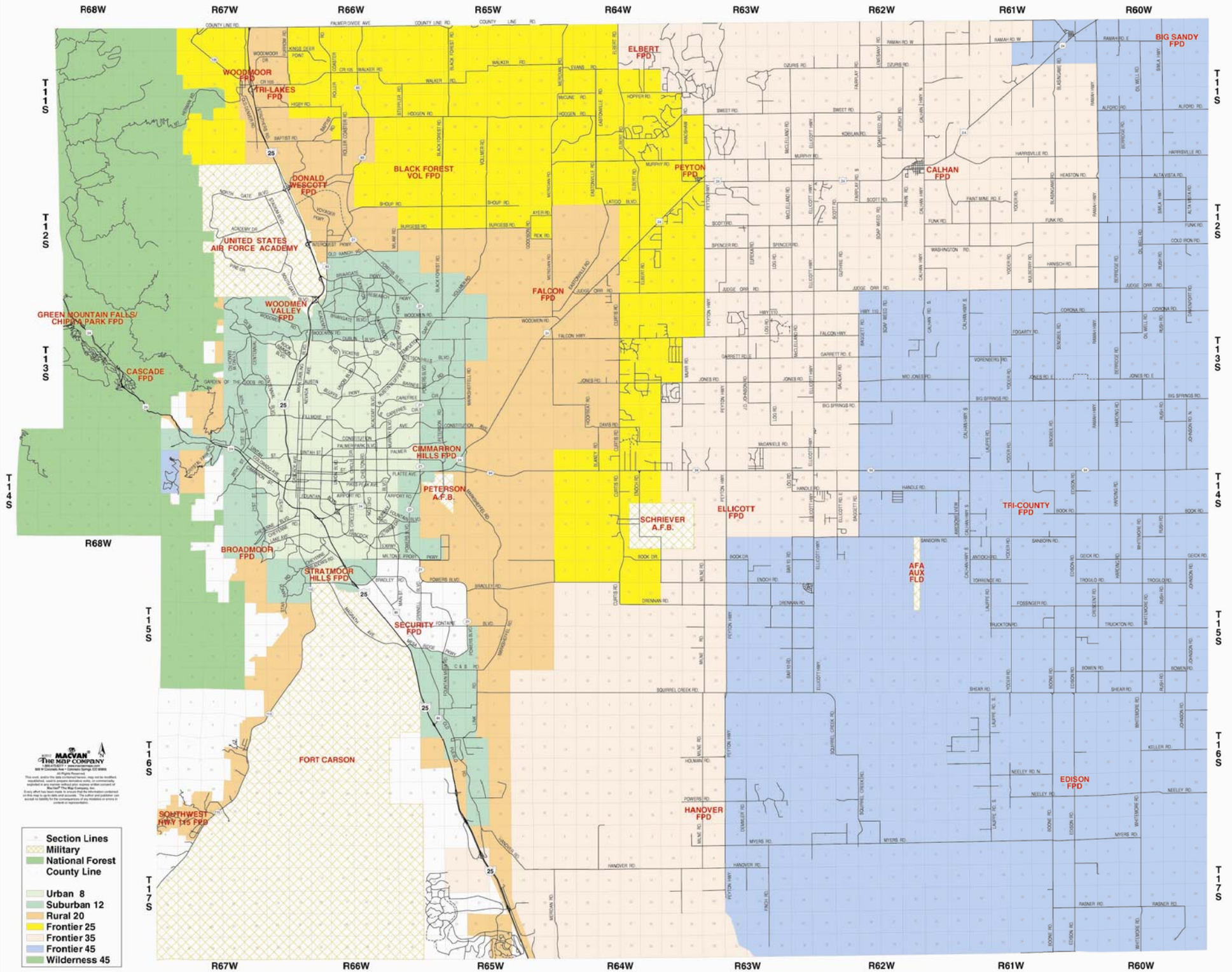


ESA RESPONSE TIME ZONES



THE MACVAN COMPANY

 1800 W. Colorado Ave. • Colorado Springs, CO 80904

 Phone: 719.594.1111 • Fax: 719.594.1112

 Website: www.macvan.com

 This map is a computer-generated map and is not intended to be used as a legal document. It is not a warranty, representation, or agreement of any kind. The user assumes all responsibility for the use of this map.

 Every effort has been made to ensure the accuracy of the information contained on this map. However, the user assumes all responsibility for the use of this map.

 No warranty is made by the user for any information or data not shown on this map.

- Section Lines
- Military
- National Forest
- County Line
- Urban 8
- Suburban 12
- Rural 20
- Frontier 25
- Frontier 35
- Frontier 45
- Wilderness 45